



Met Office

# A Brief Update on the Operational Use of Satellite Sounding Data at the Met Office

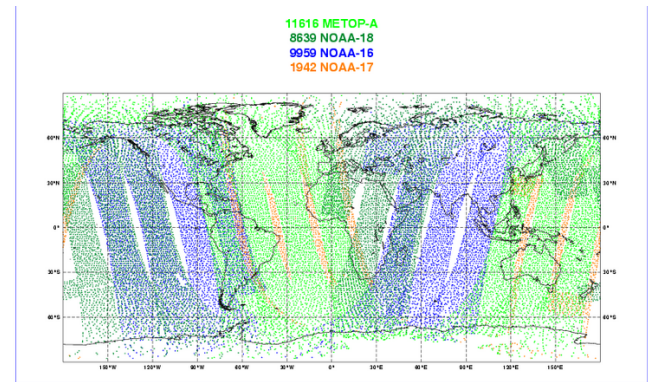
Brett Candy, Steve English, Fiona Hilton, James Cameron, Amy Doherty,  
T. R. Sreerekha, William Bell, Nigel Atkinson, Mike Rennie & Mike Thurlow

ITSC-16, Angra dos Reis, Brazil



# Contents

- ATOVS
- AIRS + introduction of IASI
- Operational Stratosphere issues
- Much more on the poster including configurations of all the other instruments...



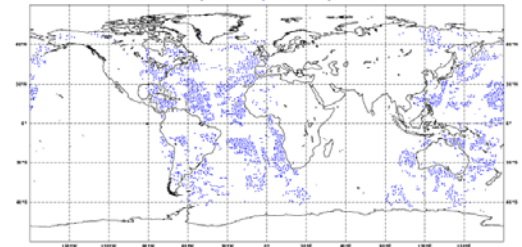
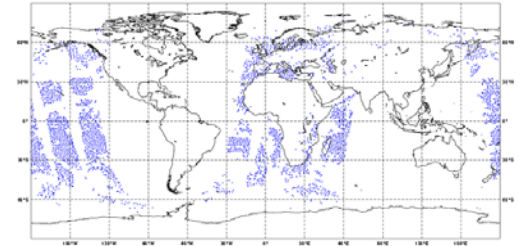
- Since ITSC-15 the amount of ATOVS data has risen by ~ 1.5 times
  - Thinning (and duplicate check) prior to 1D-Var allowed switch on of fourth ATOVS satellite + more RARS stations
  - HIRS channels reintroduced - excluding NOAA-18. (channels rejected from locally received data)
  - Swapped NOAA-15 for MetOp-A
- Biggest impact of these changes was from the introduction of MetOp-A



Met Office

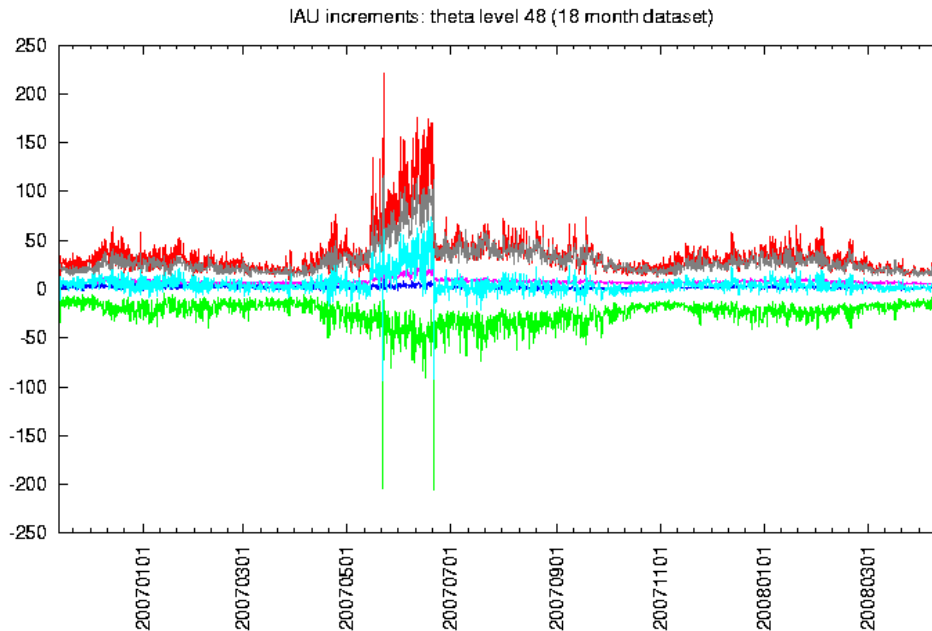
# AIRS / IASI

- Began assimilating *AIRS* over land, using channels peaking above 400 hPa – 10 in total.
  - Neutral Impact.
- *IASI* went operational for first time in November 2007. *IASI* + *ASCAT* package contributed to a large positive improvement of 3 points on our weighted skill score.



# Stratosphere/Mesosphere Assimilation Issues

- At ITSC-15 we reported that we had raised the model top to 60km ( $\sim 0.1$  hPa), allowing us to assimilate AMSU-A channels 10-14.
- During SH winter last year we noticed large analysis increments at very top of the model



Short term: give AMSU-14 more weight in analysis, reduce num of channels in the stratosphere

Long term: use climatological observations as constraint in data sparse region