

Spectral surface emissivity for use in assimilation of IR radiance data over land

Małgorzata Szczęch-Gajewska



Florence Rabier



Objectives

- ◆ **High spectral resolution sounders IASI and AIRS**
- ◆ **Background informations for Ts and SSE**
- ◆ **Validation of new emissivity maps**
- ◆ **Retrieval and assimilation of atmospheric profiles and surface parameters - preparations**

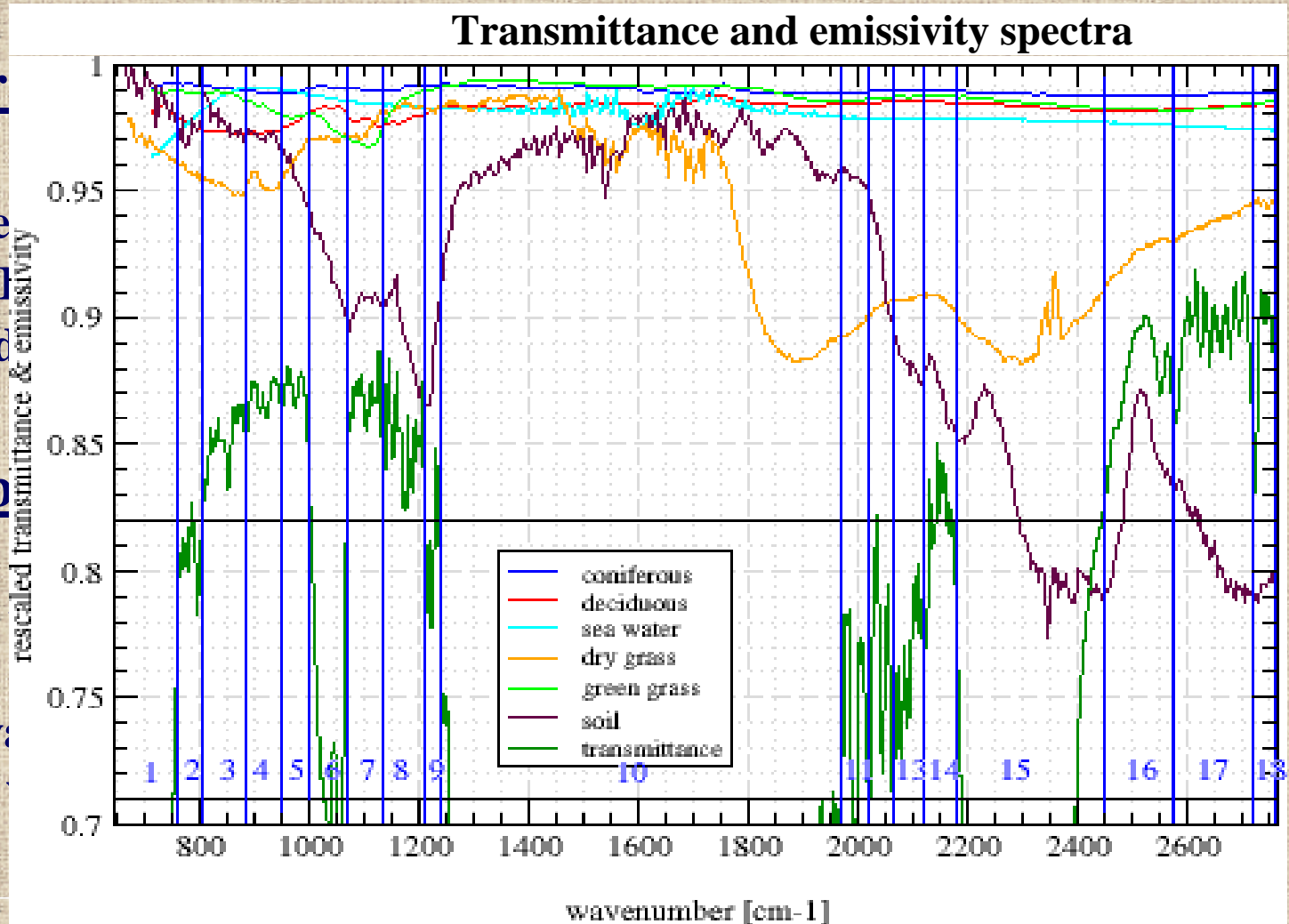
Emissivity data

Main sources

- MODIS spectral emissivity
- ASTER-JPL emissivity
- Snyder model emissivity

New wavebands

- usefulness for validation
- narrower and more numerous
- to follow the vegetation indices
- for validation



Land cover types

◆ ECOCLIMAP:

a complete surface parameter global dataset derived from:

- existing land cover maps and climate maps
- Normalised Difference Vegetation Index (NDVI) from AVHRR observations
- FAO database of soil texture

215 ecosystems combined from 12 vegetation types (pure ecosystems)

◆ New land cover types:

bare soil	rocks	permanent snow and ice
crops type C3	crops type C4	irrigated crops
nat. herbaceous (temp.)	nat. herbaceous (tropics)	wetland
needleleaf trees	ev. broadleaf trees	deciduous broadleaf trees
urban	water	

Use of IASI/AIRS data over land

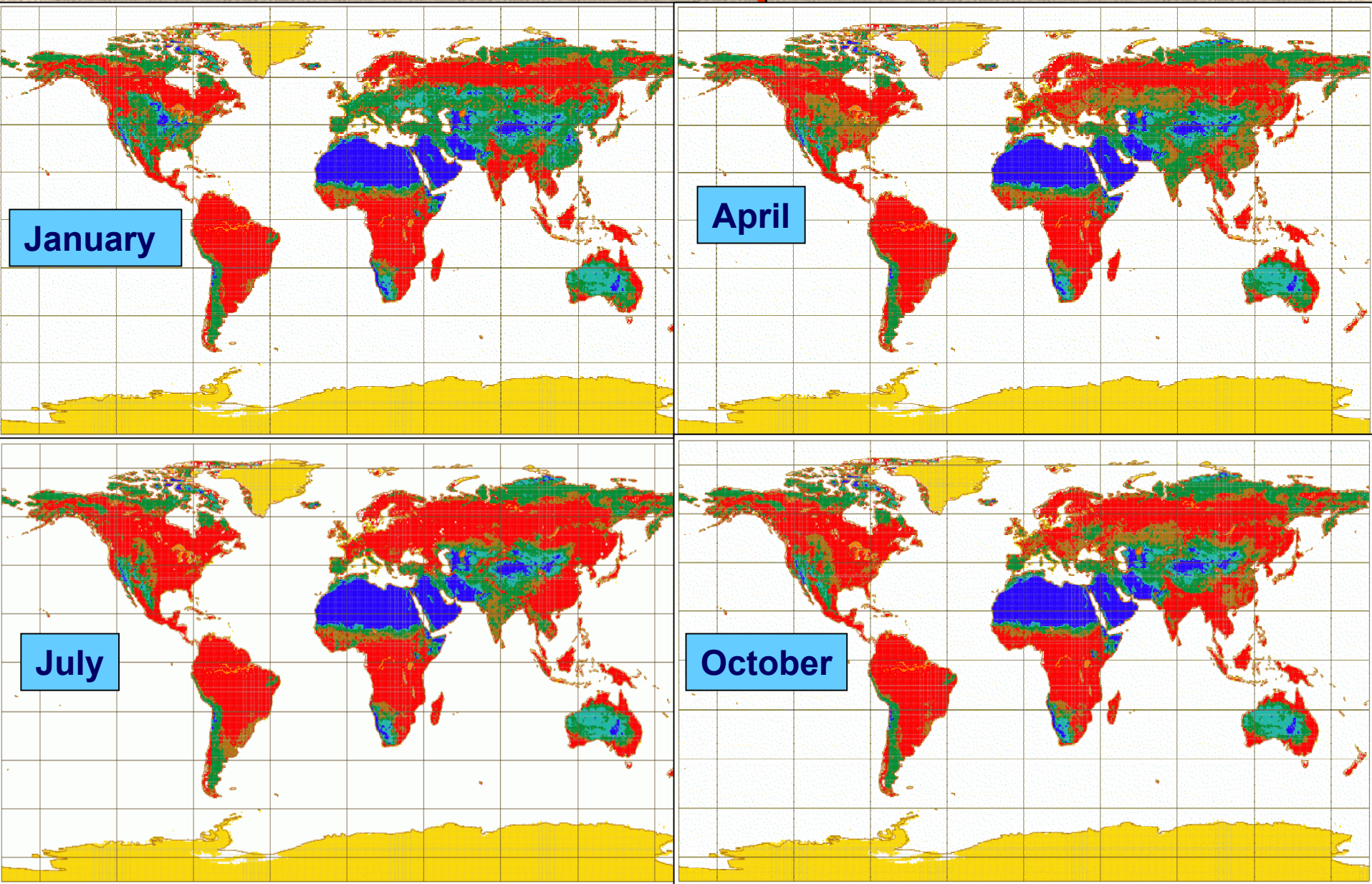


January

April

July

October

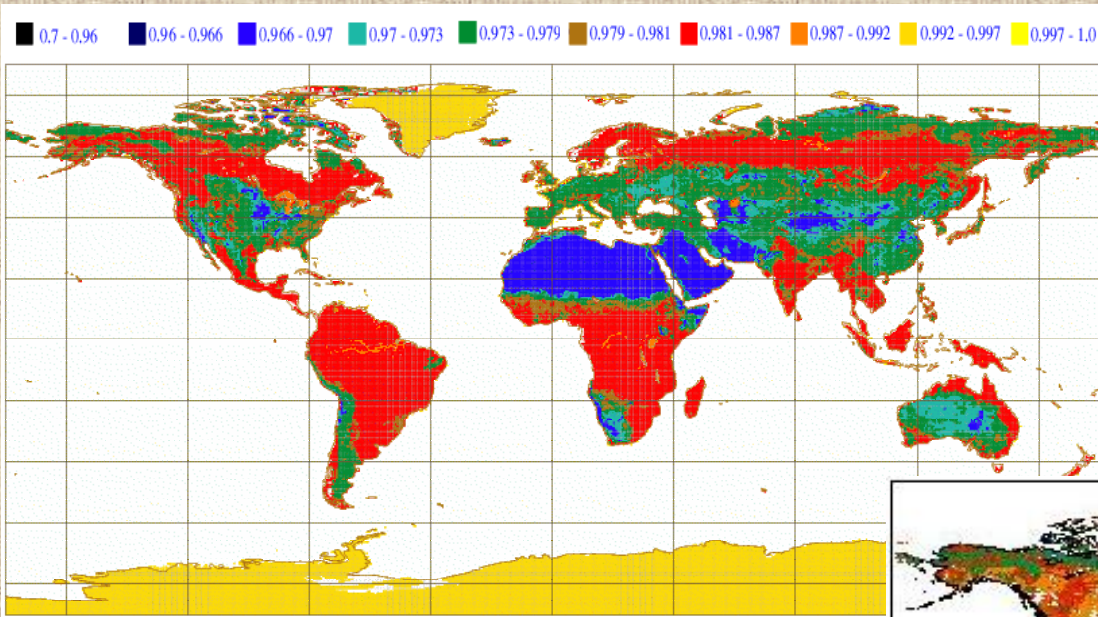


Emissivity maps validation with MODIS

- ◆ **MODIS – Moderate Resolution Imaging Spectroradiometer**
 - retrieval of land surface products
 - 'split window' technique for SSE in MODIS bands 31 and 32
 - 1km spatial resolution
 - temporally: individual swath data, 1-day average, 8-day average

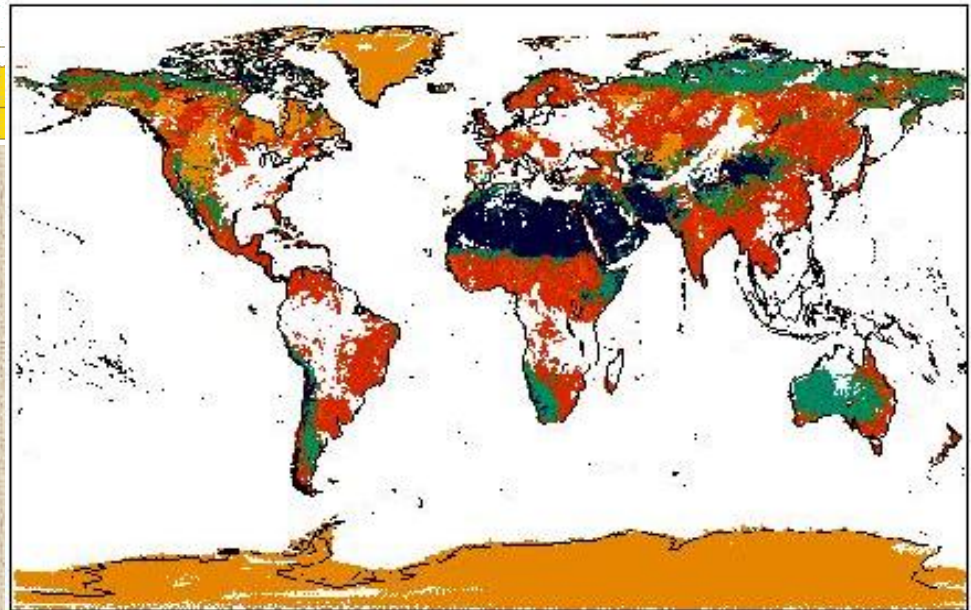
- ◆ **Maps used here were MODIS SSE composites of individual swaths**

Validation with MODIS

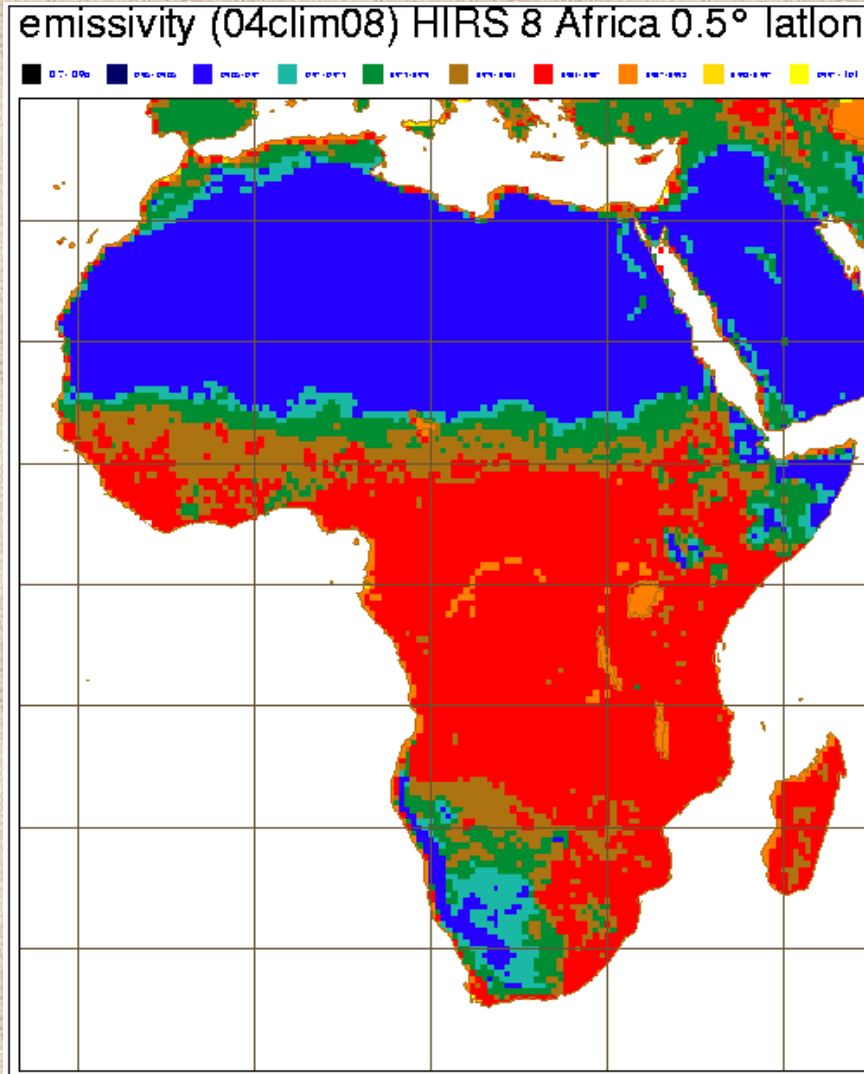


← map of SEE for January

SSE composite map, MODIS
channel 31, January 2001
(courtesy of P. Francis)

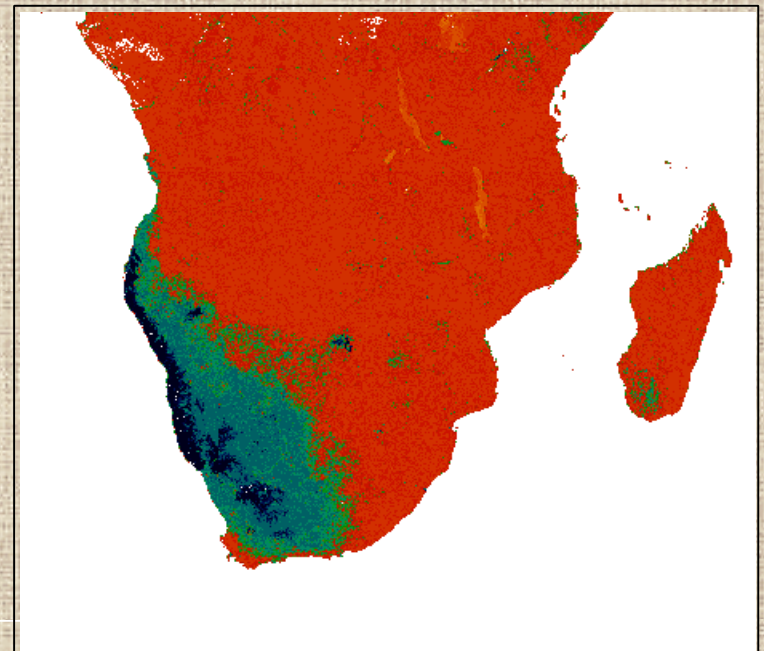


Validation with MODIS



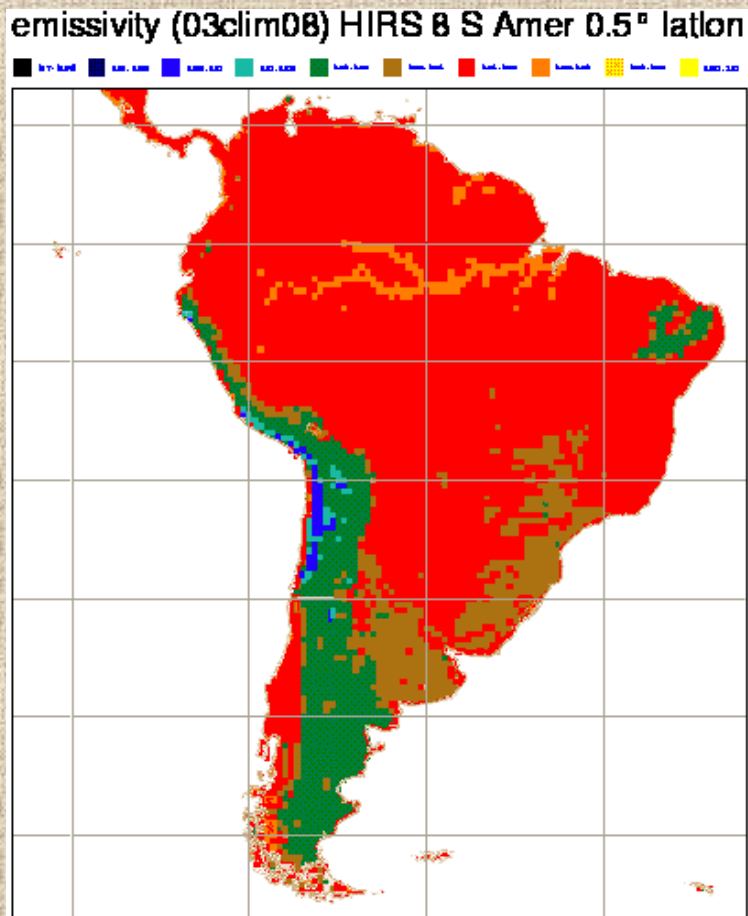
← map of SEE for August

SSE composite map, MODIS ch. 31
August 2000



Validation with MODIS

SSE map for August



SSE composite map, MODIS ch. 31
August 2000

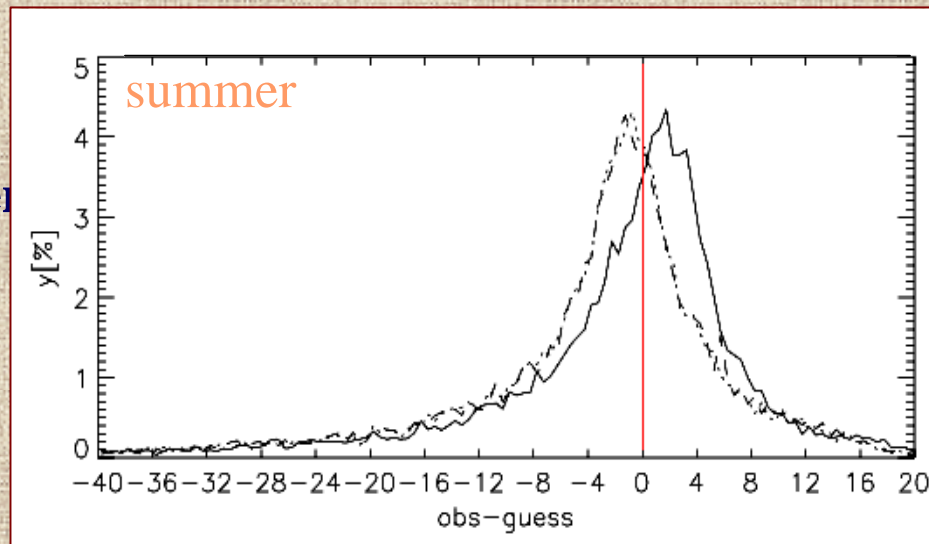
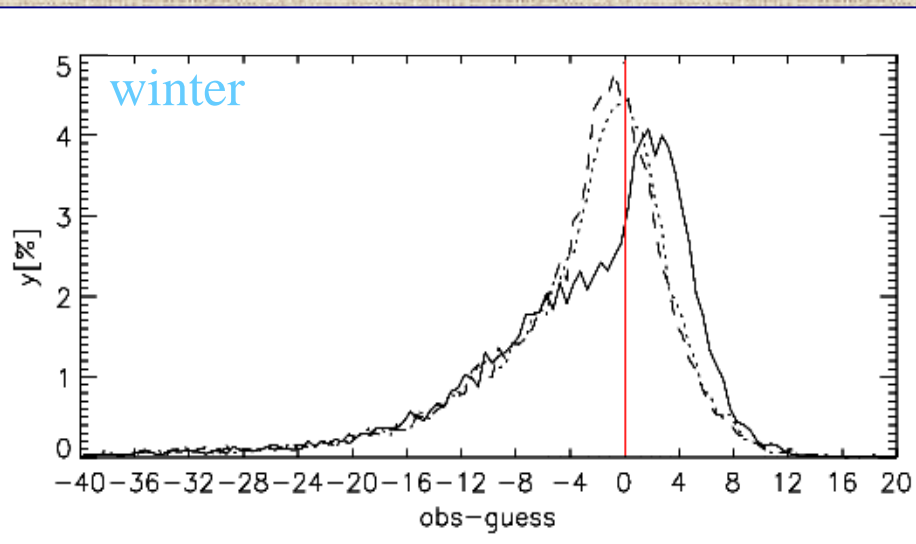


Validation HIRS-8

- ◆ **HIRS** – High-resolution Infra-Red Sounder
 - channel 8 - very sensitive to surface parameters
 - can be used to detect cloud contamination
 - waverange almost equal to MODIS ch. 31 and waveband 4

- ◆ **Tests on differences between measured and forecasted Tb (obs-guess)**
 - forecasted Tb = Tb calculated in RTTOV-7 from atmospheric profile
(6hour ARPEGE model forecast)
 - 1st reference run – SSE from ARPEGE
 - 2nd reference run – SSE from RTTOV-7
 - experimental run – closest SSE value from new maps to the observation point
 - 'good points' -1K < (obs-guess) < 2K
 - no bias correction on (obs-guess)

Validation HIRS-8



dom ref	globe	Europe	N Am	S Am	Africa	Austral	Asia	Antarct
RTTOV _(0.98)	2.9%	1.7%	2.2%	-3.1% *	10.8%	4.3%	3.7%	0.7%
ARPEGE	16.5%	12.8%	11.6%	-2.4% *	30.3%	50.3%	12.9%	0.3%

Validation AIRS

◆ The same methodology as for HIRS-8 except:

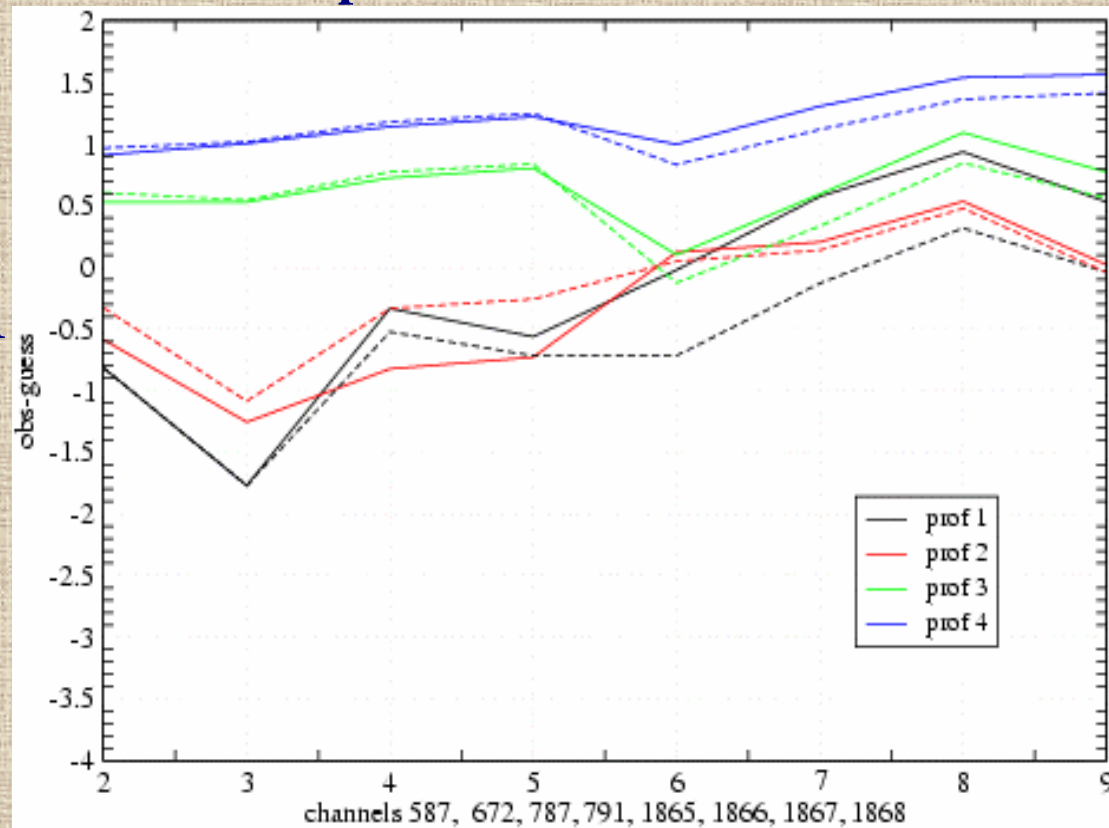
- channel selection
- cloud detection

◆ Chosen channels:

band (3+4): 587, 672, 787, 791
band 15: 1865-1868

◆ New SEE tests:

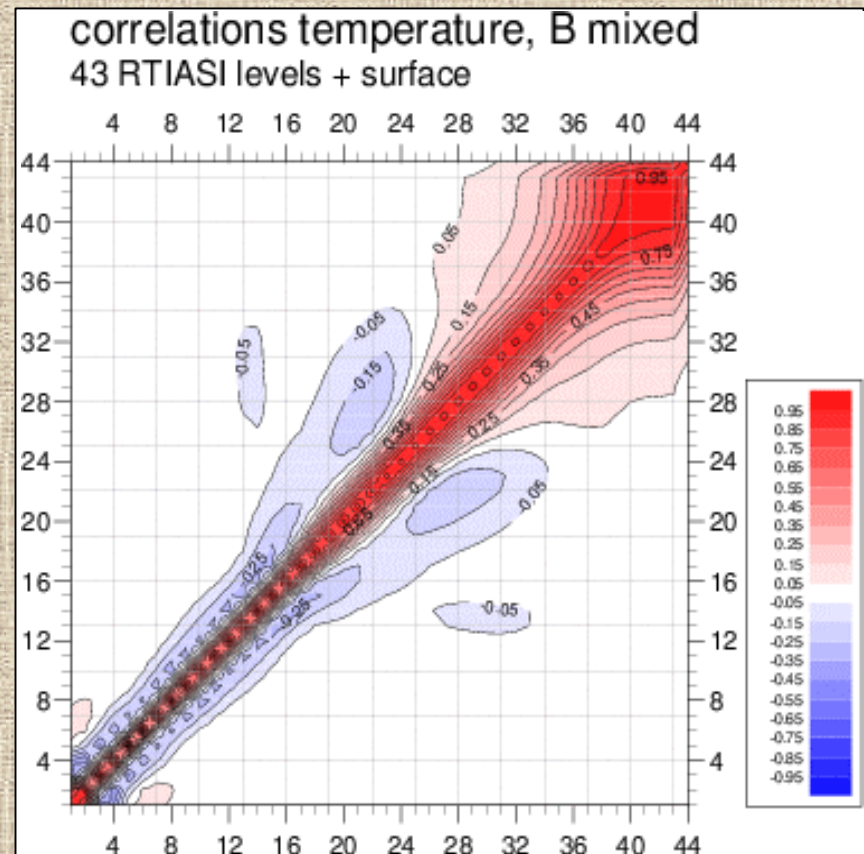
4 randomly chosen points



Background errors statistics for temperature

➤ Temperature

- ensemble method
(10 members, 1 month)
- vertical correlations with surface temperature
- separated statistics for land

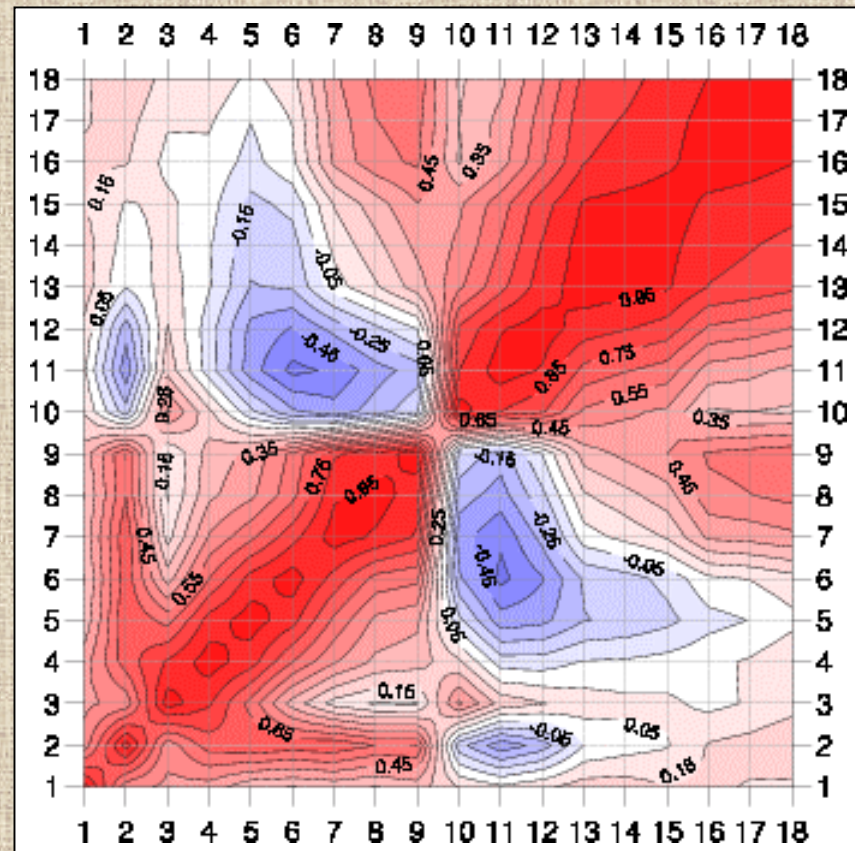


Background errors statistics for surface spectral emissivity

◆ Emissivity

- just for 5 land cover types
- arithmetic average
- weighted average

BARE SOIL

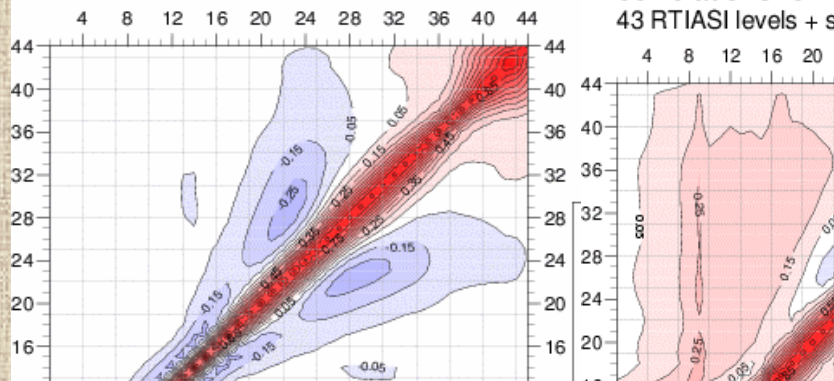


Conclusions

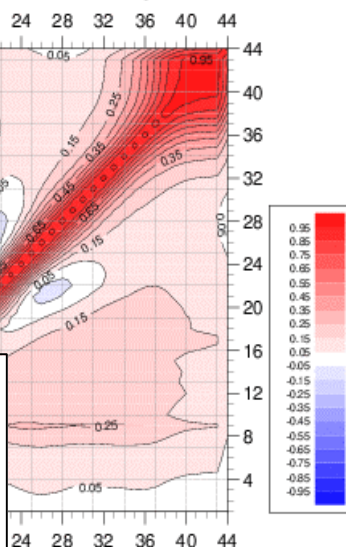
- ◆ **New emissivity maps are consistent with MODIS SSE maps**
- ◆ **Usage of the new SSE in RTTOV-7 with HIRS-8 data gave usually better results than with SSE currently used in ARPEGE or in RTTOV (with some exceptions)**
- ◆ **Preliminary tests for AIRS data showed we could expect improvement of simulated Tb values in RTTOV**
- ◆ **Work on 1D-Var on the inversion of radiances and retrieval of emissivity and Ts**

Background errors statistics for temperature

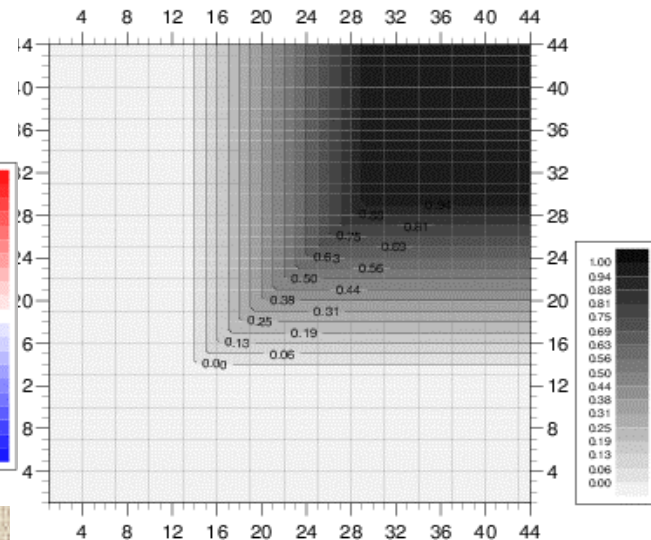
correlations temperature, B from ECMWF
43 RTIASI levels + surface



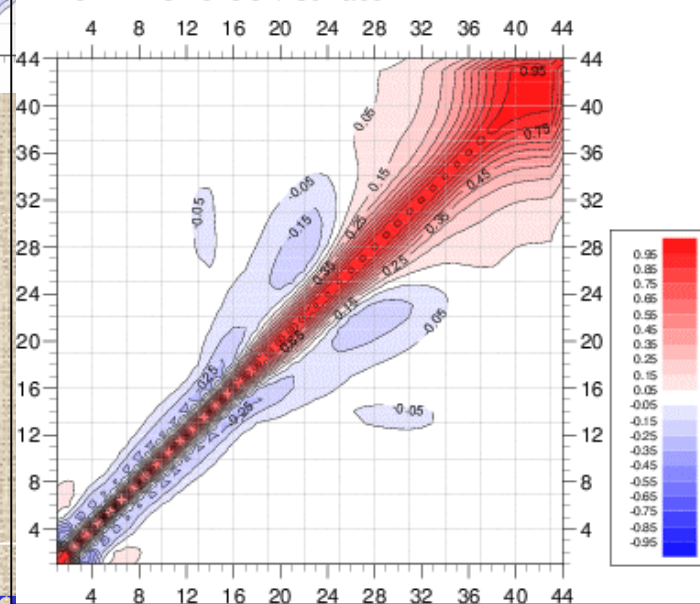
correlations for T over LAND - sumcov
43 RTIASI levels + surface, all days



matrix to combine 2 B matrices
1.0 - just my values, 0.0 - just Nadia



correlations temperature, B mixed
43 RTIASI levels + surface

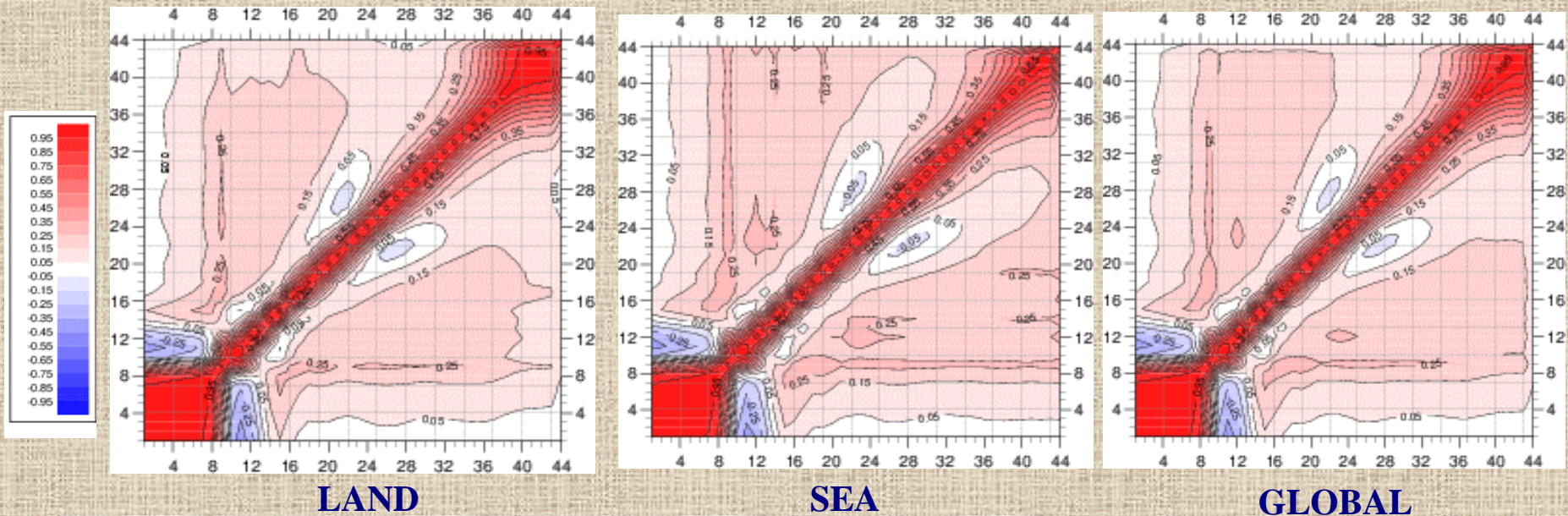


B MIXED

Background errors statistics for temperature

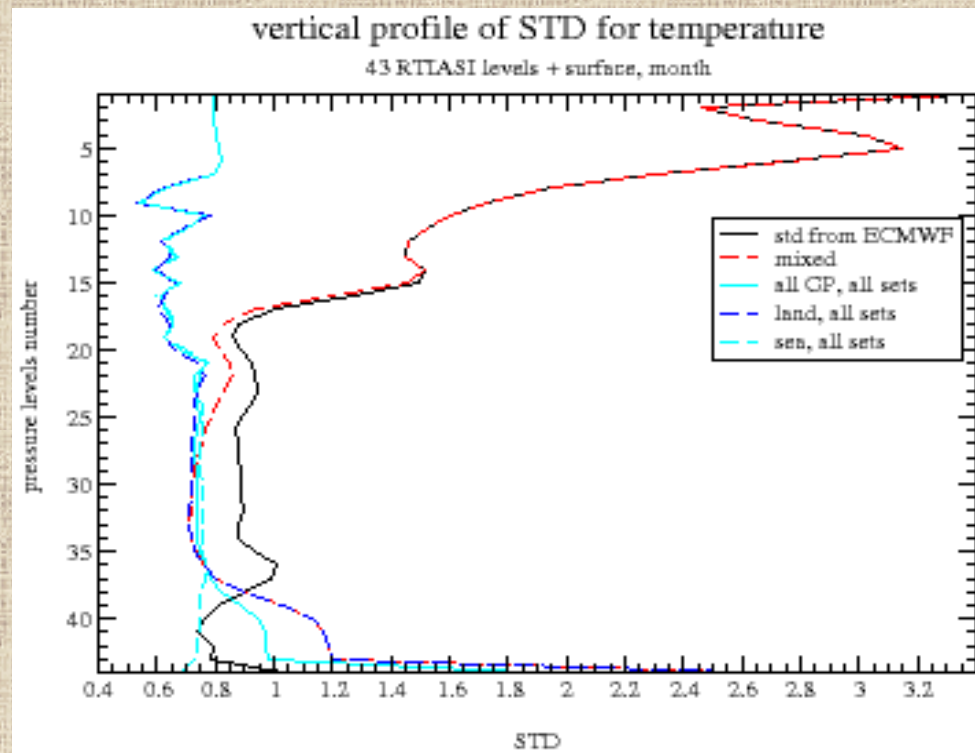
Temperature

- ensemble method (10 members, 1 month)
- vertical correlations with Ts
- separated statistics for land



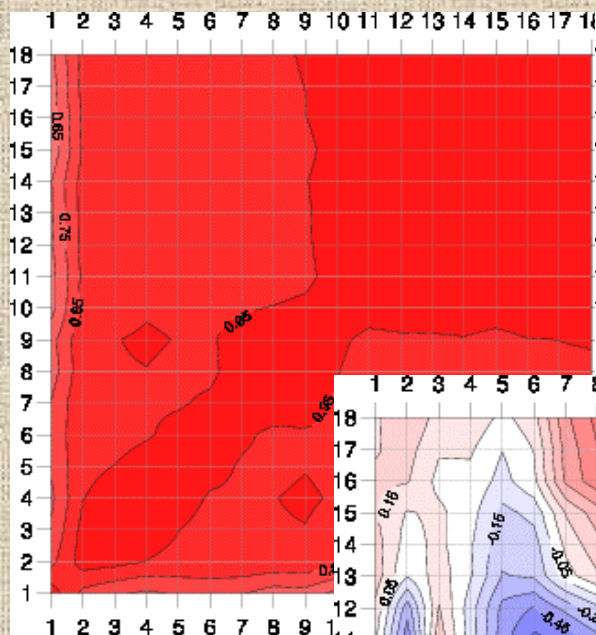
Background errors statistics for temperature

Vertical profile of T standard deviation

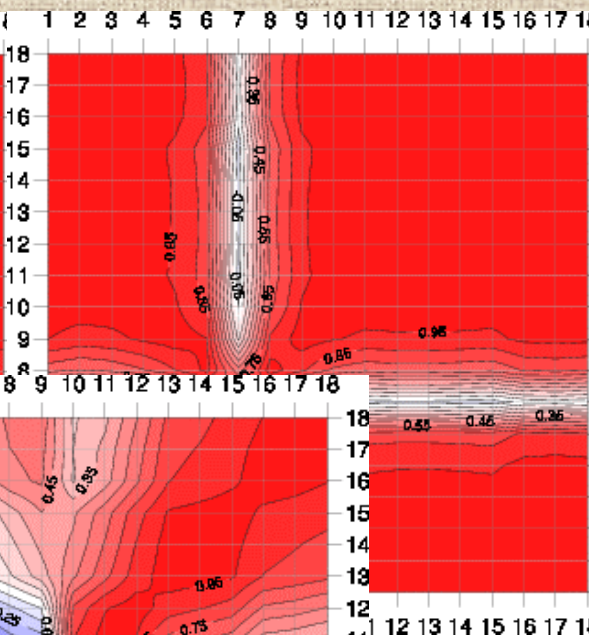


Background errors statistics for surface spectral emissivity

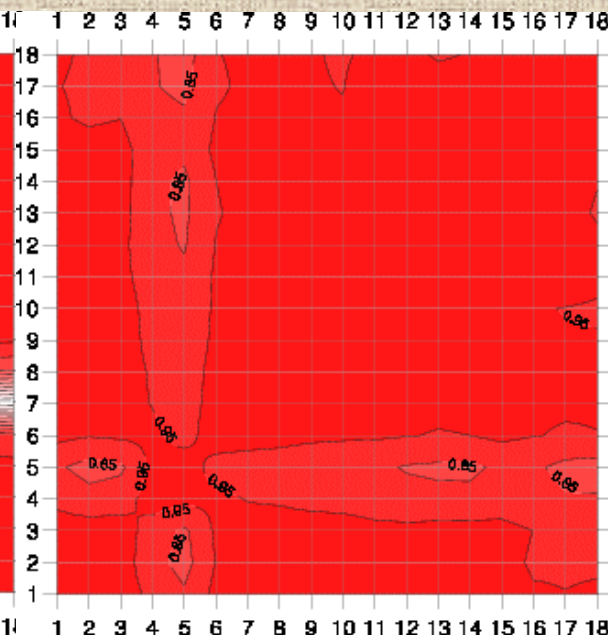
HIGH VEGETATION



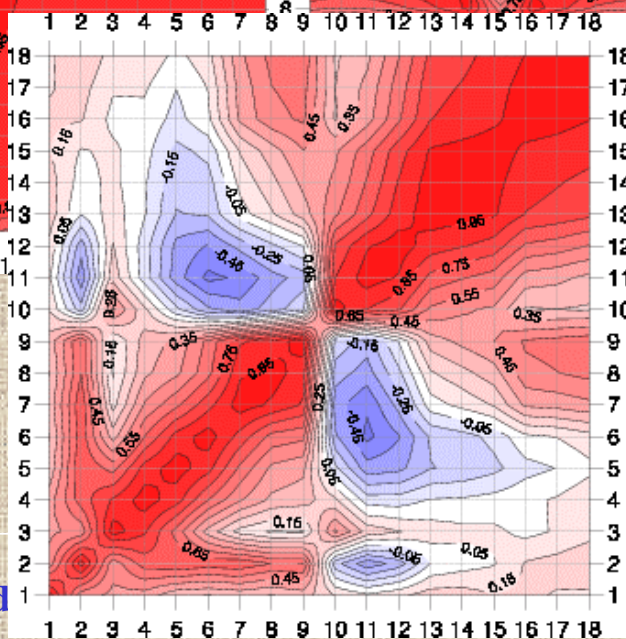
LOW VEGETATION



ICE / SNOW

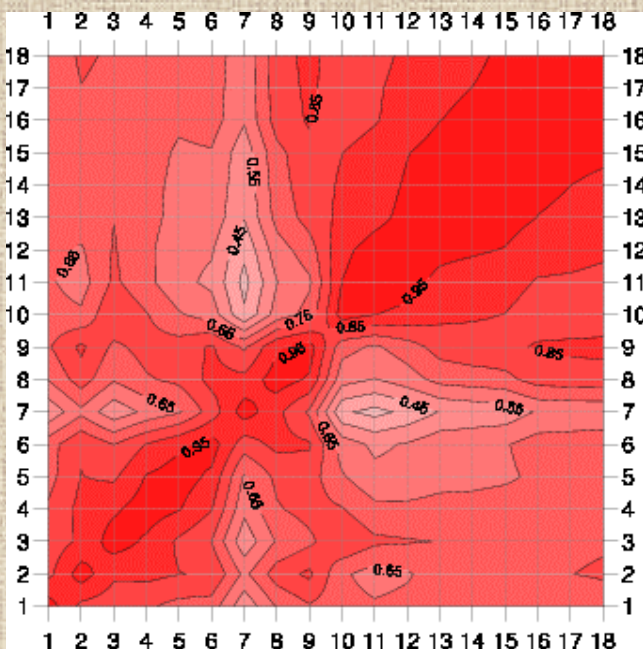


BARE SOIL

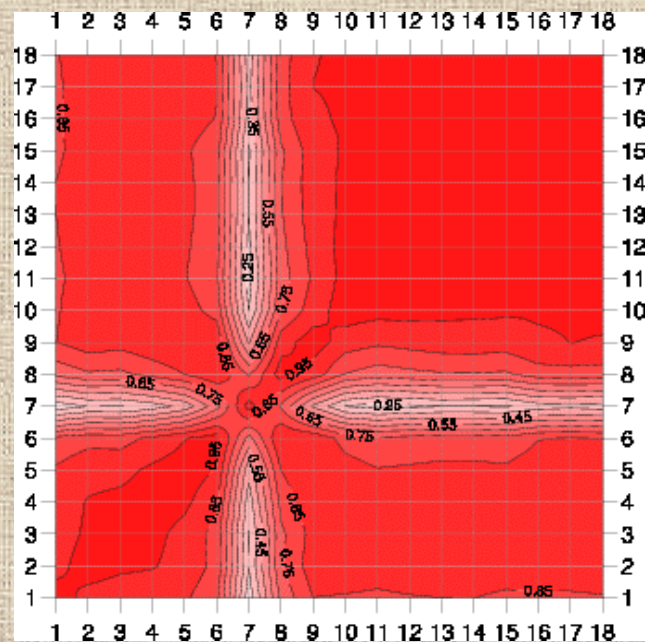


Background errors statistics for surface spectral emissivity

◆ Averages



arithmetic average



weighted average