

Community Satellite Processing Package (CSPP): Recent Progress and Future Updates

Liam Gumley, Allen Huang, Kathy Strabala, Scott Mindock, Graeme Martin, Ray Garcia, Geoff Cureton, Jim Davies, Nick Bearson, Elisabeth Weisz, Nadia Smith, Bill Smith Sr.

ITSC-19, Jeju Island, 24 March 2014



What is CSPP?

CSPP (Community Satellite Processing Package) is a collection of software systems for processing direct broadcast data from polar orbiting meteorological satellites, including:

Suomi NPP, POES, Metop, Terra, Aqua.

Funded by NOAA via JPSS Project (thanks to Mitch Goldberg).

Developed and supported by CIMSS/SSEC, UW-Madison.

The first CSPP release occurred on March 14, 2012.

Supported Satellites and Sensors

CSPP includes support for Suomi NPP and JPSS, POES, Metop, Terra, Aqua, and eventually FY-3.

- For Suomi NPP, supported sensors include **VIIRS**, **CrIS**, **ATMS** (SDRs and a subset of EDRs)
- For POES and Metop, supported sensors include **AVHRR**, **IASI**, **AMSU-A**, **MHS** (Level 2 products only; Level 1 processing provided by AAPP).
- For Aqua and Terra, supported sensors include **MODIS and AIRS**.

CSPP Software Philosophy

CSPP software must:

- Create useful products for the DB community,
- Include up-to-date algorithms,
- Be pre-compiled for 64-bit Linux,
- Be easy to install and operate,
- Include test data for verification,
- Have prompt user support,
- Run efficiently on modest hardware.

Current CSPP Software (2014/03)

1. Suomi NPP CrIS, VIIRS and ATMS SDR (geolocation and calibration)
2. Suomi NPP VIIRS EDR (cloud mask, active fires, surface reflectance, NDVI, SST, aerosol optical thickness)
3. CrIS, IASI, and AIRS Dual Regression Retrieval
4. VIIRS SDR GeoTIFF and AWIPS Reprojected Imagery
5. Microwave Integrated Retrieval System (MIRS)
6. HYDRA2 Multispectral Data Analysis Toolkit
7. Suomi NPP Imagery EDR (projected imagery for AWIPS)

CSPP Release History (2014/03)

March 21, 2014 (CSPP Suomi NPP Imagery EDR Software Versions 1.1)

March 20, 2014 (CSPP Microwave Integrated Retrieval System (MIRS) Software Version 1.0)

March 19, 2014 (CSPP Suomi NPP HYDRA2 Multispectral Data Analysis Toolkit Version 1.0)

February 14, 2014 (CSPP Suomi NPP VIIRS EDR Software Version 1.2.1)

December 18, 2013 (CSPP Suomi NPP CrIS, VIIRS and ATMS SDR Software Version 1.5)

December 18, 2013 (CSPP Suomi NPP VIIRS EDR Software Version 1.2)

October 18, 2013 (CSPP VIIRS SDR GeoTIFF and AWIPS Reprojection Software Version 1.1)

September 24, 2013 (CSPP CrIS, AIRS and IASI Dual Regression Retrieval Software Version 1.2)

July 8, 2013 (CSPP Suomi NPP CrIS, VIIRS and ATMS SDR Software Version 1.4)

July 8, 2013 (CSPP Suomi NPP VIIRS EDR Software Version 1.1)

April 29, 2013 (CSPP CrIS, AIRS and IASI Dual Regression Retrieval Software Version 1.1)

February 22, 2013 (CSPP VIIRS SDR GeoTIFF and AWIPS Reprojection Software Version 1.0)

February 8, 2013 (CSPP Suomi NPP VIIRS Cloud Mask and Active Fires EDR Software Version 1.0)

February 8, 2013 (CSPP Suomi NPP CrIS, VIIRS and ATMS SDR Software Version 1.3)

November 26, 2012 (CSPP CrIS, AIRS and IASI Dual Regression Retrieval Software Version 1.0)

October 4, 2012 (CSPP Suomi NPP CrIS, VIIRS and ATMS SDR Software Version 1.2)

May 4, 2012 (CSPP CrIS UW Retrieval Software Version 1.0)

May 2, 2012 (CSPP Suomi NPP CrIS, VIIRS and ATMS SDR Software Version 1.1)

March 14, 2012 (CSPP Suomi NPP VIIRS and ATMS SDR Software Version 1.0)

1. SNPP VIIRS, CrIS, and ATMS SDR

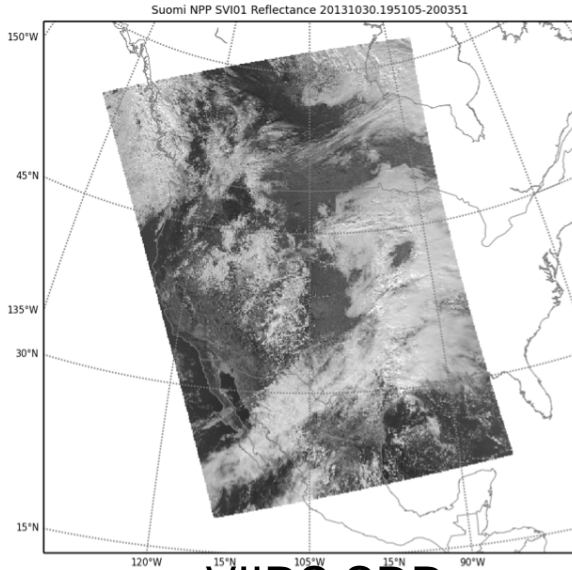
- Converts RDR files (CCSDS packets) to SDR files (geolocation and calibrated radiances and reflectances)
- Based on operational algorithms and lookup tables (IDPS version Mx7.2)
- CSPP version added features include multi-core processing, automated LUT updates, granule aggregation, HDF5 compression.
- Supports CrIS full spectral resolution data.

See poster 1p.07 by Scott Mindock.

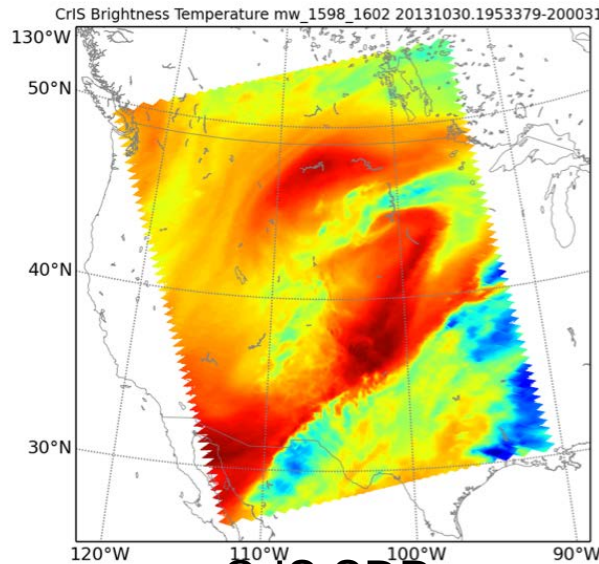
2. SNPP VIIRS EDR

- Creates geophysical products from VIIRS radiances and reflectances.
- Based on operational algorithms and lookup tables (IDPS version Mx7.2).
- Products include cloud mask, active fires, surface reflectance, NDVI, SST, AOT.
- CSPP version added features include selectable products, multi-core processing, automated ancillary data download, granule aggregation, HDF5 internal compression.

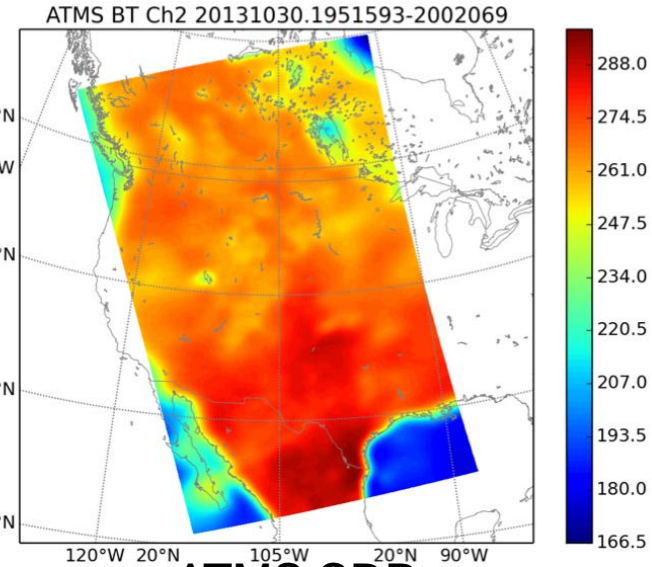
CSPP Products from SSEC Direct Broadcast



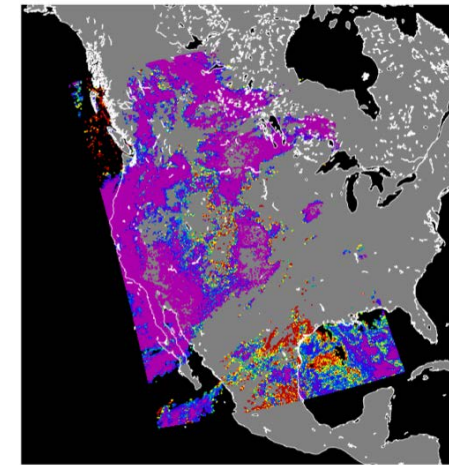
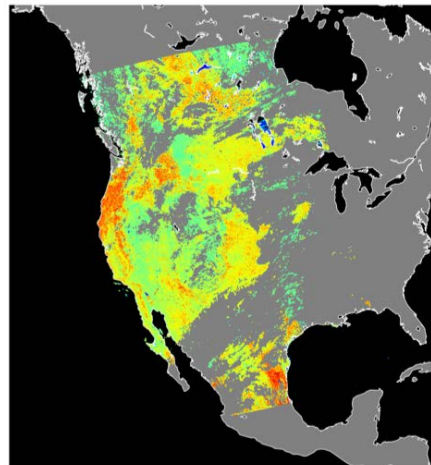
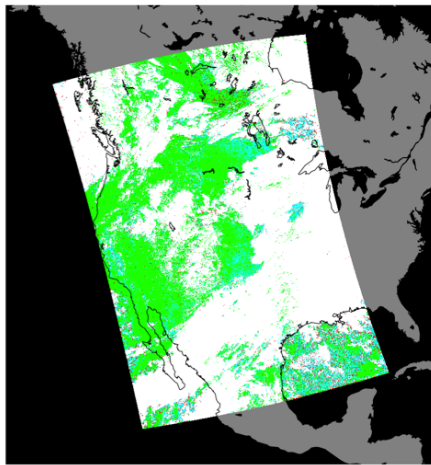
VIIRS SDR



CrIS SDR

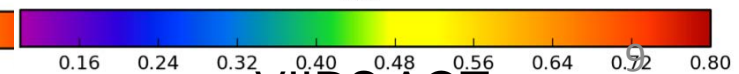
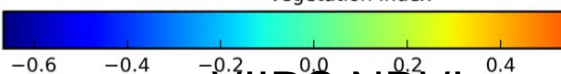
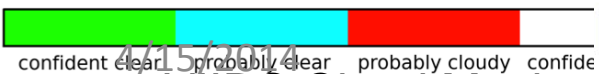


ATMS SDR



Vegetation Index

AOT



VIIRS Cloud Mask

VIIRS NDVI

VIIRS AOT

3. CrIS/IASI/AIRS Retrievals

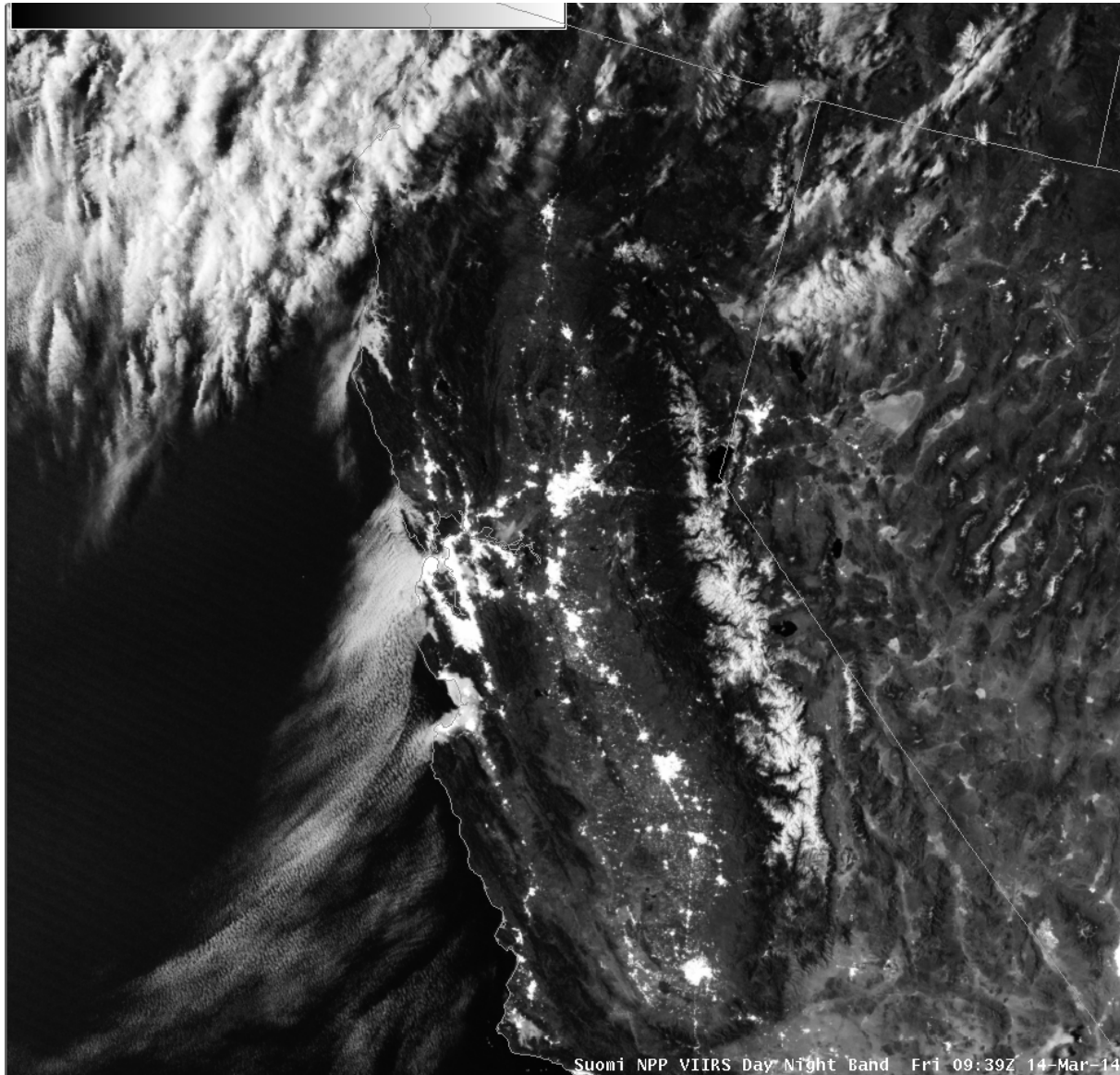
- Computes profiles of atmospheric temperature, moisture, and ozone.
- Computes cloud top products (height, pressure, emissivity) surface parameters.
- Common fast regression algorithm for CrIS/IASI/AIRS by Smith/Weisz/Smith.
- Products are created for every FOV, clear and cloudy.

See presentation 8.03 by Nadia Smith

4. VIIRS SDR Projected Imagery

- Creates VIIRS imagery on a user-defined grid and projection.
- Reads multi-granule VIIRS SDRs as input (M-band, I-band, and DNB).
- Saves images in GeoTIFF and AWIPS formats.
- Used operationally at SSEC and GINA to create products for National Weather Service Forecast Offices.

Low Cloud/ Fog Seen by VIIRS DNB at Night



AREA FORECAST DISCUSSION
NATIONAL WEATHER SERVICE SAN
FRANCISCO BAY AREA
443 AM PDT FRI MAR 14 2014

.DISCUSSION...AS OF 4:10 AM PDT
FRIDAY...THE DRY TAIL END OF A
WEATHER SYSTEM MOVING IN TO THE
PACIFIC NORTHWEST IS APPROACHING
OUR DISTRICT...AND RESULTING IN
ENHANCEMENT OF THE MARINE
LAYER AND **A RETURN OF THE
MARINE STRATUS. LATEST GOES FOG
PRODUCT IMAGERY...AND IN RATHER
SPECTACULAR DETAIL JUST REC'D
SUOMI VIIRS NIGHTTIME HIGH RES
VISUAL IMAGE...SHOW COVERAGE
ALONG MUCH OF THE COAST FROM
PT REYES SOUTH TO THE VICINITY OF
THE MONTEREY PENINSULA...AND A
BROAD SWATH EXTENDING INLAND
ACROSS SAN FRANCISCO AND
THROUGH THE GOLDEN GATE TO THE
EAST BAY.** LATEST BODEGA BAY AND FT
ORD PROFILER DATA INDICATE A
MARINE LAYER DEPTH OF ABOUT 1300
FT. SOME THIN HIGH CLOUDS ARE
ALSO PASSING THROUGH ABOVE.

5. Microwave Integrated Retrieval System

- Retrieves atmospheric profile and surface parameters from ATMS, AMSU-A, and MHS sensor SDR and Level 1B data.
- Development is led by Sid Boukabara at the NOAA NESDIS Center for Satellite Applications and Research (STAR).
- Supports ATMS SDR from CSPP or CLASS, and Metop/NOAA AMSU-A and MHS from AAPP v7.

MIRS Product List

Official Validated Products:

Temperature profile over open water ocean
Humidity profile over open water ocean
Humidity Profile over non-coastal Land
Total Precipitable Water (TPW) over open water ocean
Total Precipitable Water over non-coastal land
Land surface temperature
Surface Emissivity over land and snow
Surface Type Classification
Snow Water Equivalent (SWE)
Sea Ice Concentration (SIC)
Snow Cover Extent (SCE)
Vertically-Integrated Non-precipitating Cloud Liquid Water (CLW) over open water ocean
Vertically-Integrated Graupel Water Path (IWP)
Vertically-Integrated Rain Water Path (RWP)

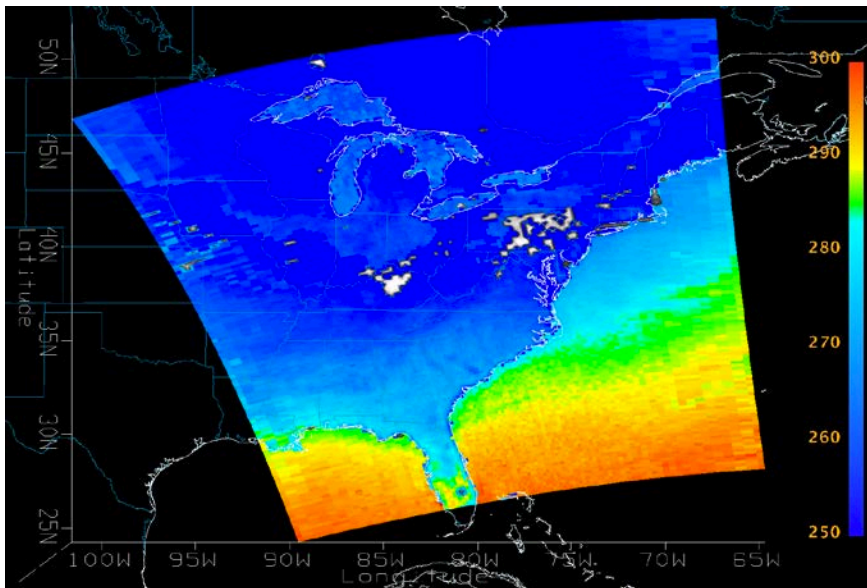
Rainfall Rate (RR) over open water ocean and non-coastal, non-snow-covered land surface types

Experimental Products (not fully validated):

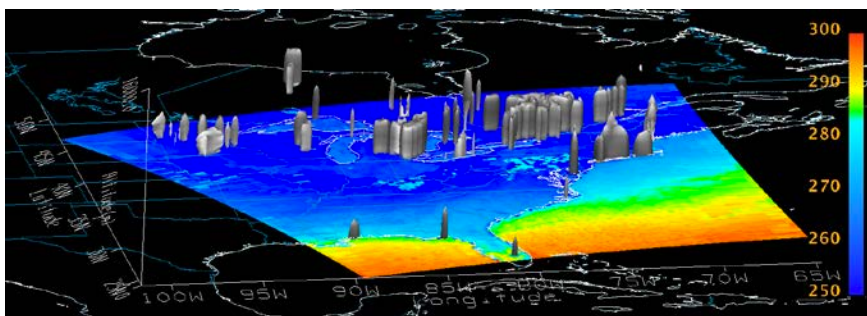
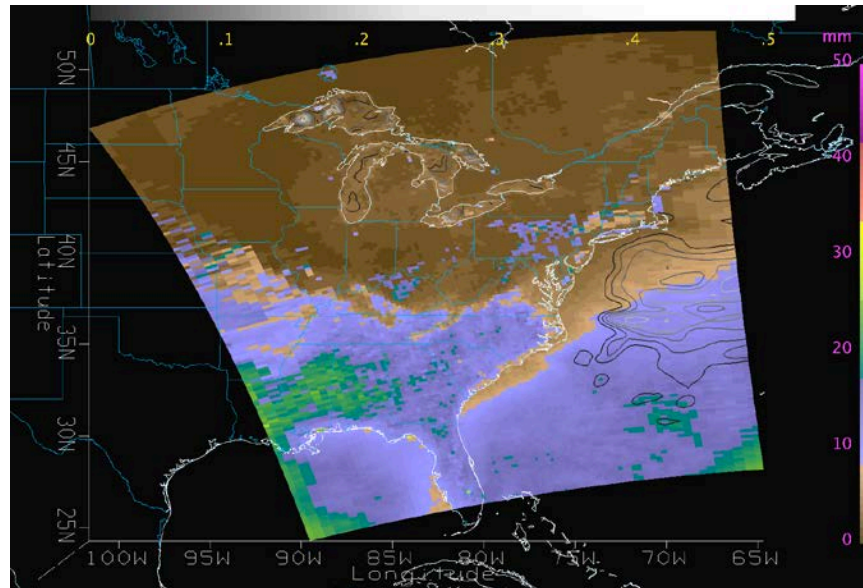
Cloud Liquid Water Profile (CLWP) over ocean
Surface Temperature (skin) extended to snow-covered land surface type
Surface Temperature (skin) extended to open ocean water
Effective grain size of snow (over snow-covered land surface)
Multi-Year (MY) Type Sea Ice Concentration
First-Year (FY) Type Sea Ice Concentration

MIRS Products from ATMS DB

Surface Temperature
with Rain Mass Profile



Total Precipitable Water
with contours of Cloud Liquid Water



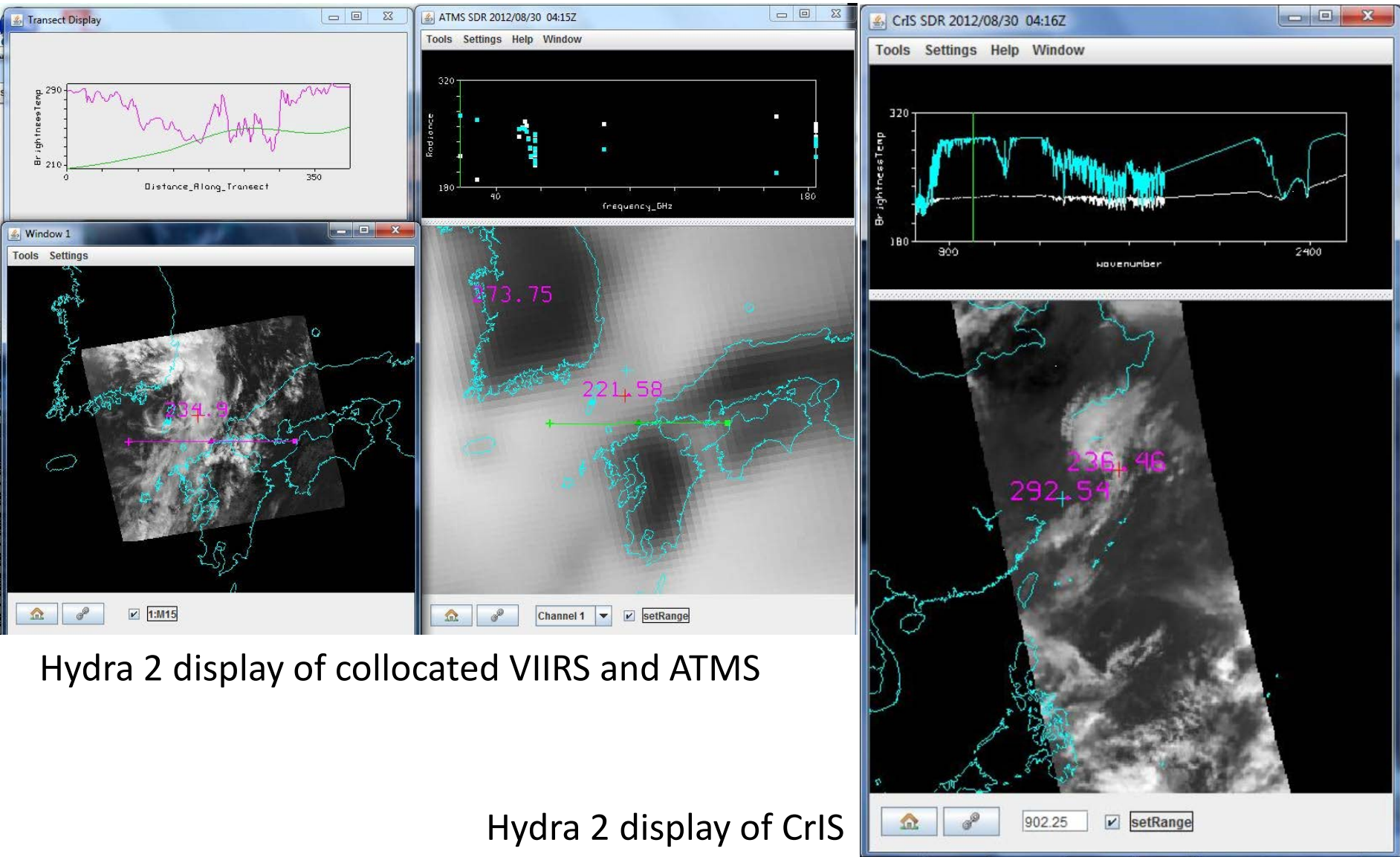
S-NPP/ATMS
2014-01-23 18:19Z

6. Hydra2 Multispectral Data Toolkit

- Allows interactive display of Level 1B and Level 2 products from multispectral imagers (VIIRS, MODIS), high spectral resolution sounders (CrIS, IASI, AIRS), and microwave sounders (ATMS, AMSU).
- Designed to be easy to learn and use, especially for students.
- Supported on Windows, OS X, and Linux.

See poster 1p.19 by Tom Rink

Hydra2 Screenshots (SNPP 2012/08/30 04:16Z)



Hydra 2 display of collocated VIIRS and ATMS

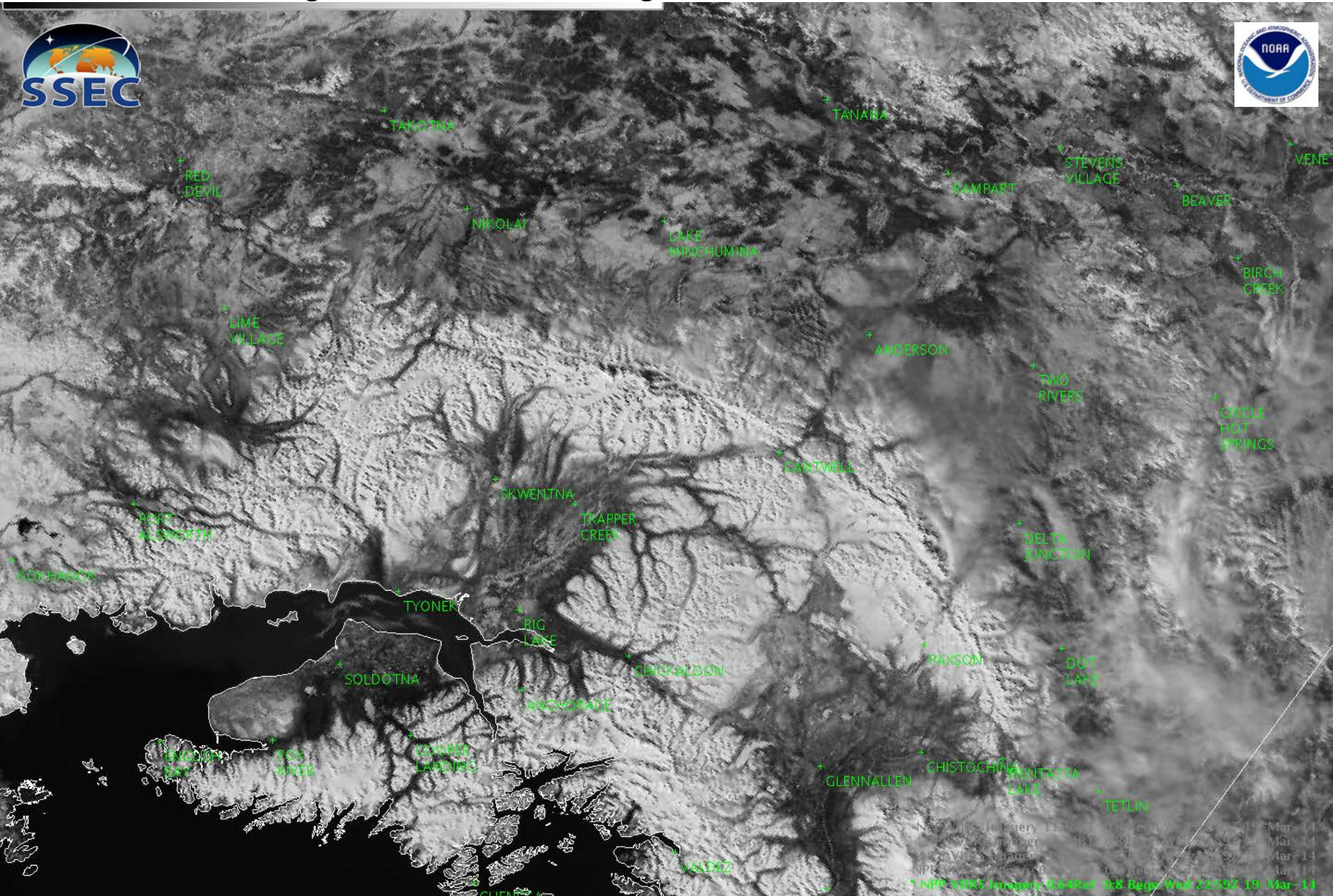
Hydra 2 display of CrIS

7. VIIRS Imagery EDR

- Creates projected VIIRS image data on a Ground Track Mercator grid.
- Product can be directly ingested into NWS AWIPS2.
- Supports I-band resolution (375 meters).
- Provides VIIRS Near Constant Contrast (NCC) product for Day/Night Band.

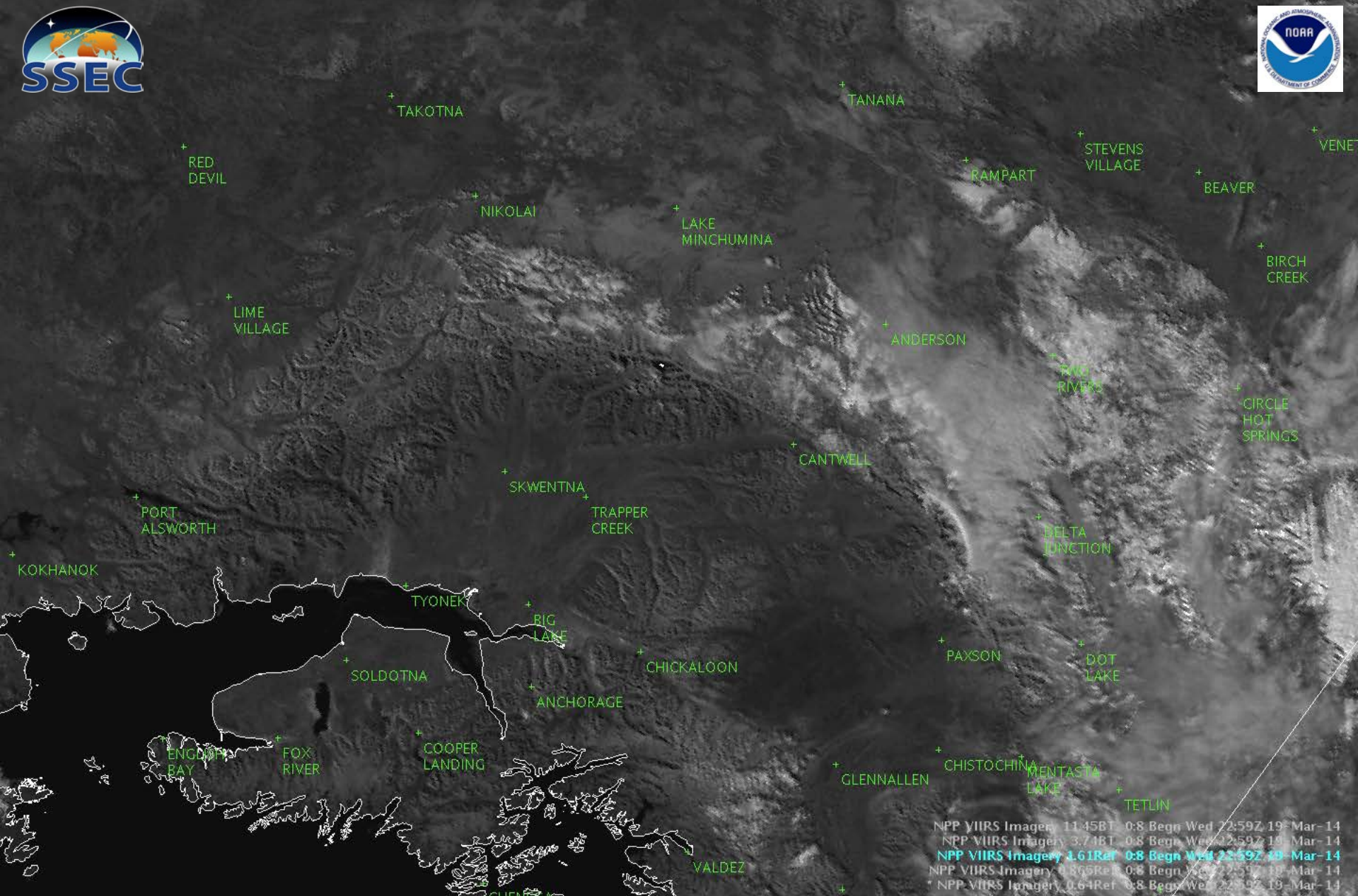
VIIRS Imagery EDR I-Band 1 in AWIPS-II

Processed using CSPP Software including conversion to NetCDF4 19 March 2014



VIIRS Imagery EDR I-Band 3 in AWIPS-II

Processed using CSPP Software including conversion to NetCDF4 19 March 2014





NPP VIIRS Imagery 11.45BT 0:8 Bgn Wed 22:59Z 19-Mar-14
NPP VIIRS Imagery 3.74BT 0:8 Bgn Wed 22:59Z 19-Mar-14
NPP VIIRS Imagery 1.61Ref 0:8 Bgn Wed 22:59Z 19-Mar-14
NPP VIIRS Imagery 0.86Ref 0:8 Bgn Wed 22:59Z 19-Mar-14
NPP VIIRS Imagery 0.64Ref 0:8 Bgn Wed 22:59Z 19-Mar-14

CSPP/IMAPP Users Group

- Held May 21-23, 2013 in Madison, WI, USA.
- Presentations from NOAA, NASA, Met Office, Meteo France, Landgate, SMHI, EUMETSAT, CONABIO, DWD, GINA, and SSEC.
- More than 40 attendees; 29 oral presentations.
- Next one in 2015? Perhaps in Europe?

CSPP Website

CIMSS » CSPP

 **Community Satellite Processing Package** 

[Home](#) | [Download](#) | [Applications](#) | [History](#) | [Credits](#) | [Forum](#)

The Community Satellite Processing Package (CSPP) supports the Direct Broadcast (DB) meteorological and environmental satellite community through the packaging and distribution of open source science software. CSPP supports DB users of both polar orbiting and geostationary satellite data processing and regional real-time applications through distribution of free open source software, and through training in local product applications. CSPP is funded through [NOAA JPSS](#).

Suomi National Polar-orbiting Partnership (NPP) Products

CSPP software to support Suomi NPP:

- [VIIRS](#), [ATMS](#) and [CrIS](#) calibration and geolocation software (Raw Data Records (RDRs) to Science Data Records (SDRs));
[Learn more ...](#)
- [VIIRS](#) Environmental Data Records (EDRs), including a subset of Land, Ocean and Atmosphere Products;
[Learn more ...](#)
- [VIIRS](#) SDR reprojection software for the creation of GeoTIFFs and/or AWIPS NetCDF files;
[Learn more ...](#)
- [CrIS](#), [AIRS](#) and [IASI](#) University of Wisconsin dual regression single Field-of-View (FOV) Temperature, Moisture, Surface and Cloud Retrieval Environmental Data Record (EDR);
[Learn more ...](#)
- S-NPP [VIIRS](#), [ATMS](#), [CrIS](#) and EOS [Aqua](#) and [Terra](#) HYDRA2 multispectral data analysis toolkit;
[Learn more ...](#)
- NOAA/NESDIS/STAR [Microwave Integrated Retrieval System \(MIRS\)](#) supporting S-NPP [ATMS](#), NOAA-18, 19 and MetOP-A, B [AMSU-A](#) and [MHS](#) instruments;
[Learn more ...](#)

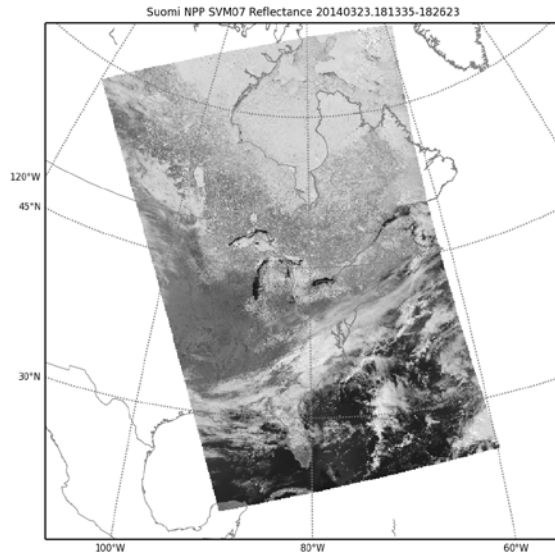
What's New

- [VIIRS Imagery EDR Software v1.1](#)
- [MIRS Microwave Retrieval Software v1.0](#)
- [S-NPP HYDRA2 Data Analysis Tool v1.0](#)
- [VIIRS EDR v1.2.1 Release](#)
- [NPP SDR v1.5 Release](#)
- [VIIRS Reprojection Software v1.1 Release](#)

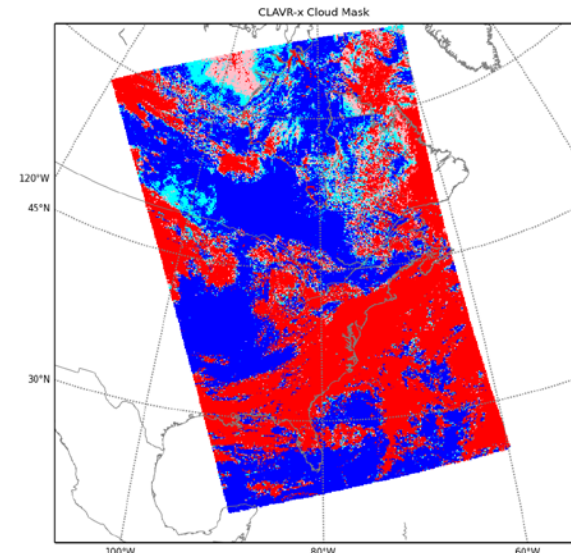
Coming Soon #1: CLAVR-X

- Computes cloud parameters (cloud top height, pressure, phase, ...) and surface parameters from multispectral imager data.
- Development led by Andy Heidinger.
- Supports VIIRS, MODIS, and AVHRR.
 - VIIRS SDRs from CSPP or IDPS/CLASS
 - MODIS Level 1B from SeaDAS or MODAPS
 - AVHRR Level 1B from AAPP v7
- NOAA plans to make CLAVR-X the operational cloud algorithm for SNPP and JPSS.

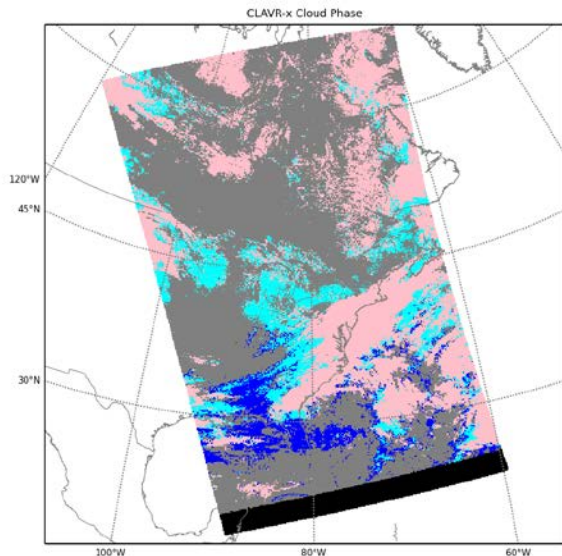
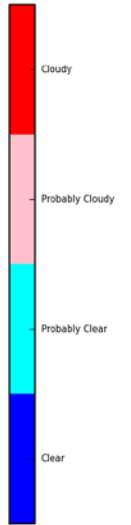
CLAVR-X products from VIIRS DB



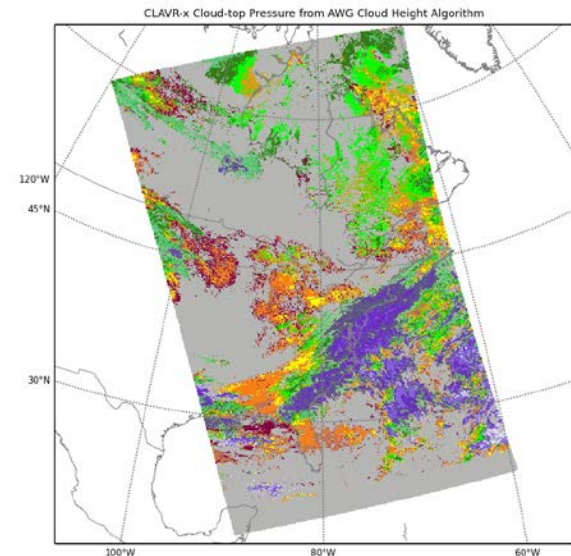
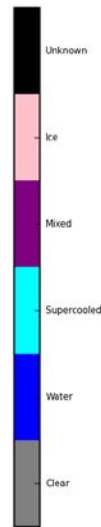
VIIRS SVM07



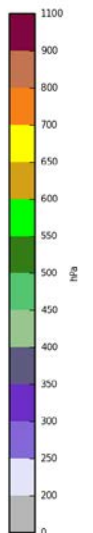
Cloud Mask



Cloud Phase



Cloud Top Pressure



Coming Soon #2: NUCAPS

- Creates profiles of temperature, moisture, ozone, and other trace gases; cloud and surface products; and other products all from cloud cleared radiances.
- Development led by Chris Barnet.
- Also supports IASI/AMSU/MHS and AIRS/AMSU.
- NOAA plans to make NUCAPS the operational sounding algorithm for SNPP and JPSS.

See presentation 1.06 by Chris Barnet

Coming Soon #3: CSPP GEO

- NOAA GOES-R Project is funding the development of a DB package for GEO satellites.
- Will create cloud and surface products from DB data (e.g., GRB from GOES-R).
- Supported satellites/sensors will include GOES-R ABI, GOES-N Imager, and Himawari-8.
- Algorithms will be based on GOES-R versions; implemented in GEOCAT.

See poster 2p.03 by Graeme Martin

Credits

CSPP team at UW/SSEC/CIMSS.

Algorithm Developers.

JPSS Project.

DB User Community!

Liam.Gumley@ssec.wisc.edu