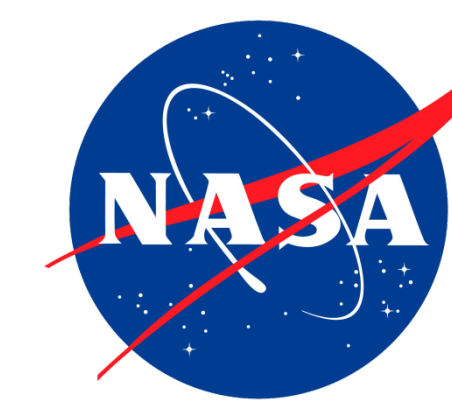




CSPP SNPP SDR

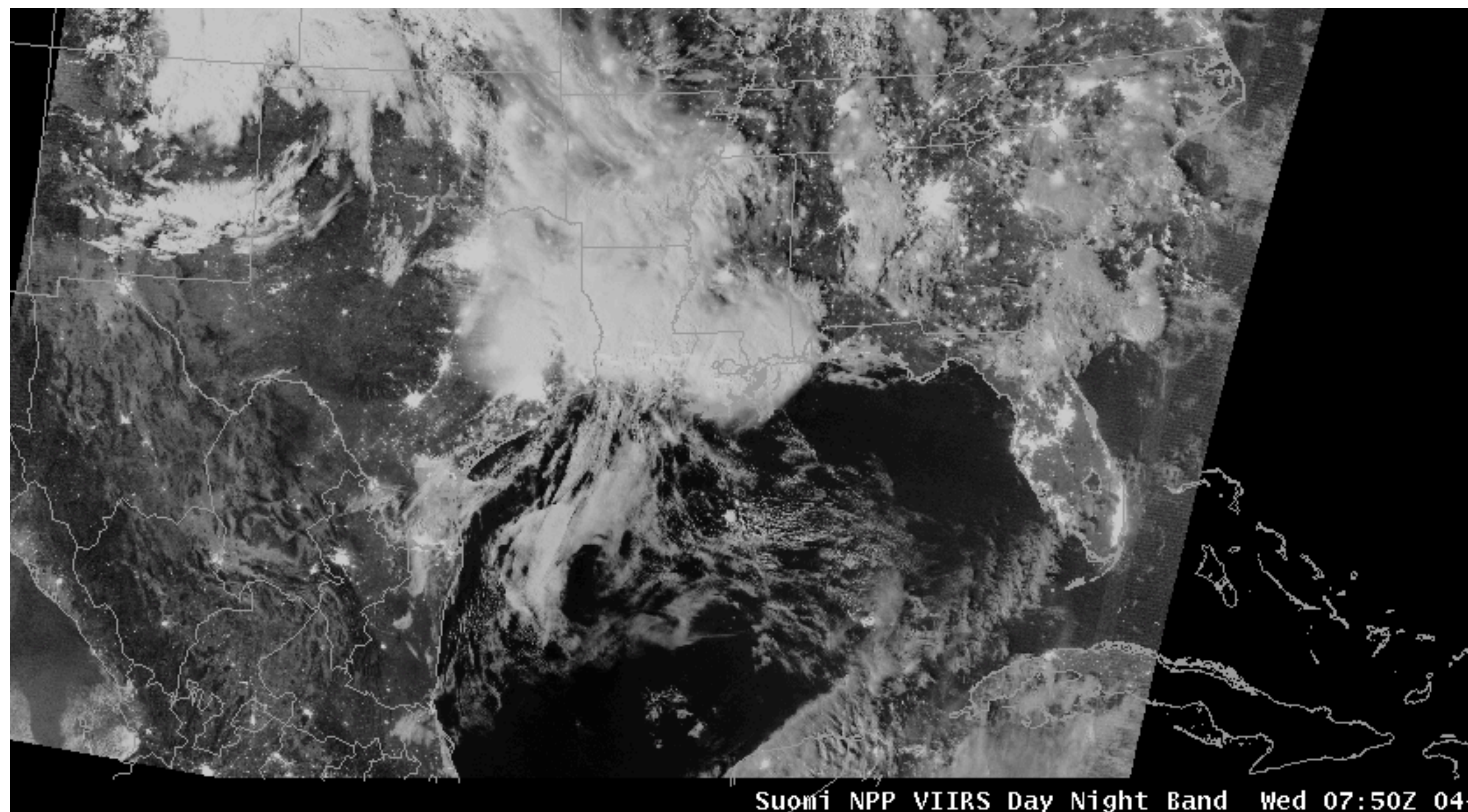


S. Mindock, R. Garcia, G. Martin, K. Strabala, E. Schiffer, G. Cureton, L. Gumley, H.L. Huang
CIMSS/SSEC, University of Wisconsin-Madison

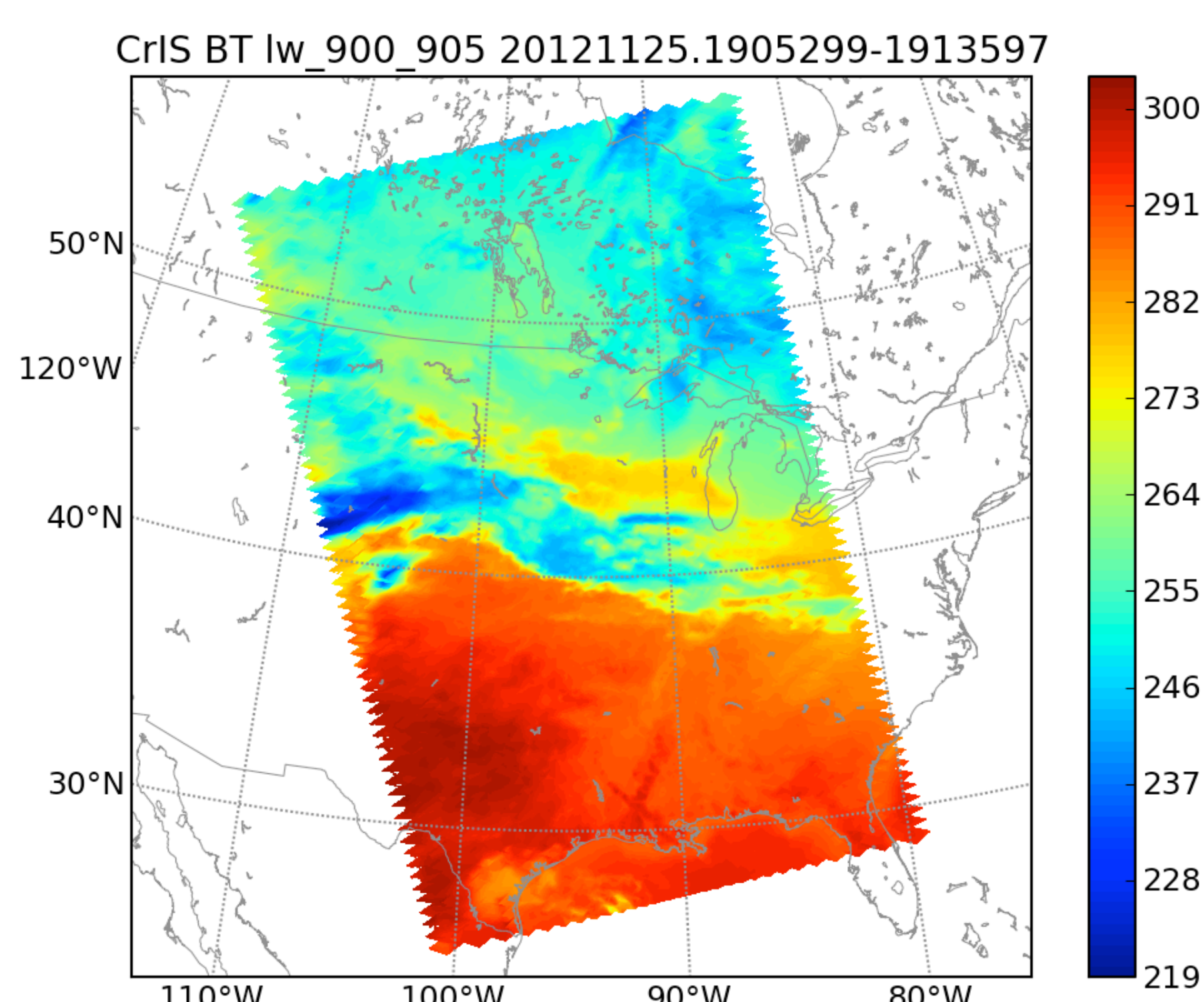
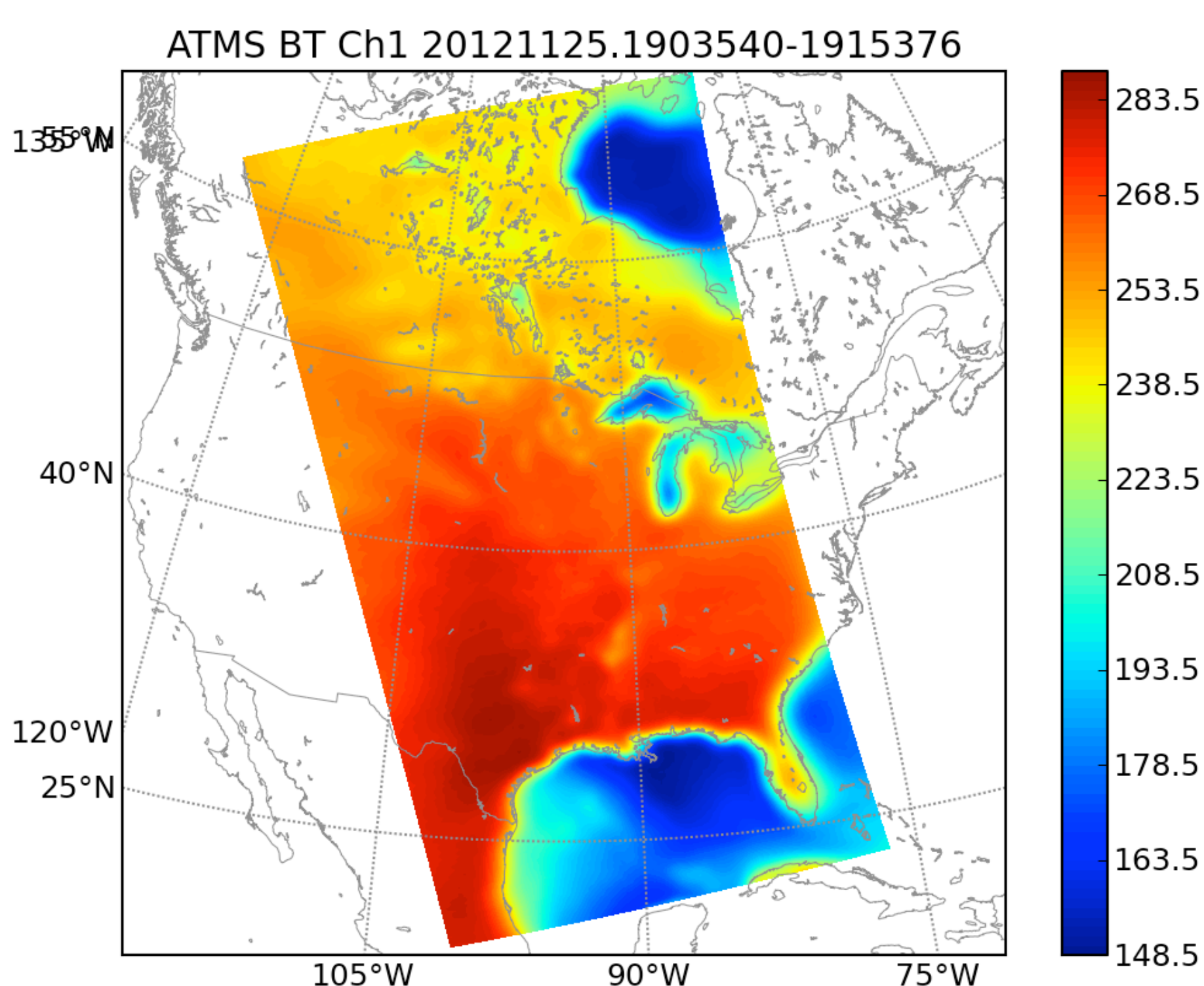
Overview

The Community Satellite Processing Package (CSPP) has been developed at the UW-Madison Space Science and Engineering Center to support the Direct Broadcast Community (DB). The CSPP SDR software package includes the Suomi NPP VIIRS SDR algorithm as provided by the Algorithm Development Library (ADL). The CSPP SDR package provides DB users the opportunity to process VIIRS data as collected by a Suomi NPP capable antennas. The poster illustrates how additional software packages and ancillary support servers are coupled with ADL to provide this capability.

CSPP->POLAR2GRID->AWIPS DNB
2013/04/04



Suomi NPP VIIRS Day Night Band Wed 07:50Z 04-4



Where is CSPP SDR?

The CSPP SDR package is used EVERYWHERE!

The CSPP software web site has had over 500 registrations since March 2012. CIMSS hosts a number of URLs to obtain CSPP software packages and participate in the community.

- <http://cimss.ssec.wisc.edu/cspp>
- <https://forums.ssec.wisc.edu/CSPP>
- <http://jpsddb.ssec.wisc.edu/ancillary>

CIMSS also hosts a number of ADL related URLs.

- <https://jps-adl-wiki.ssec.wisc.edu/mediawiki>
- <https://forums.ssec.wisc.edu/ADL>

Who uses CSPP SDR?

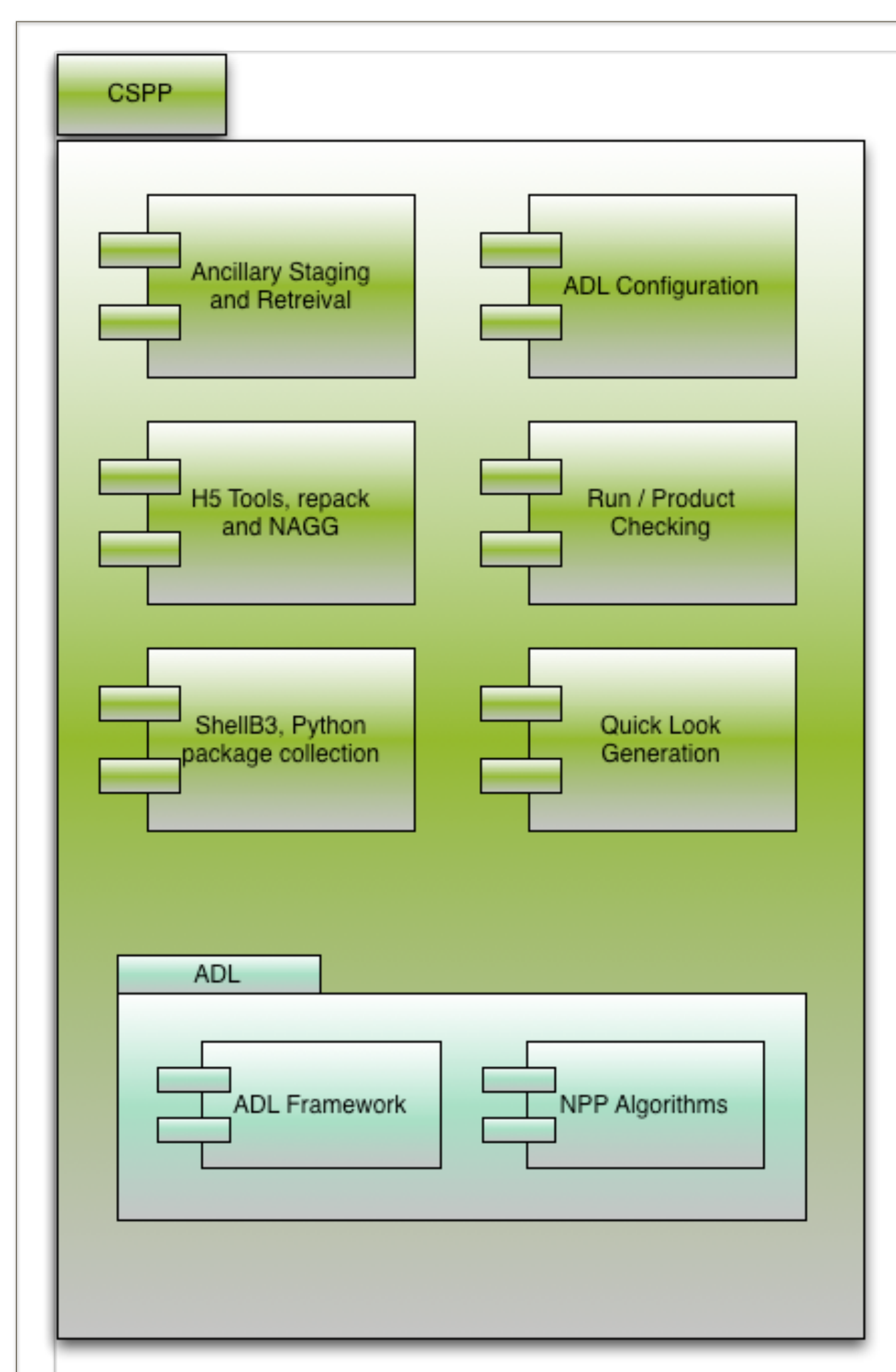
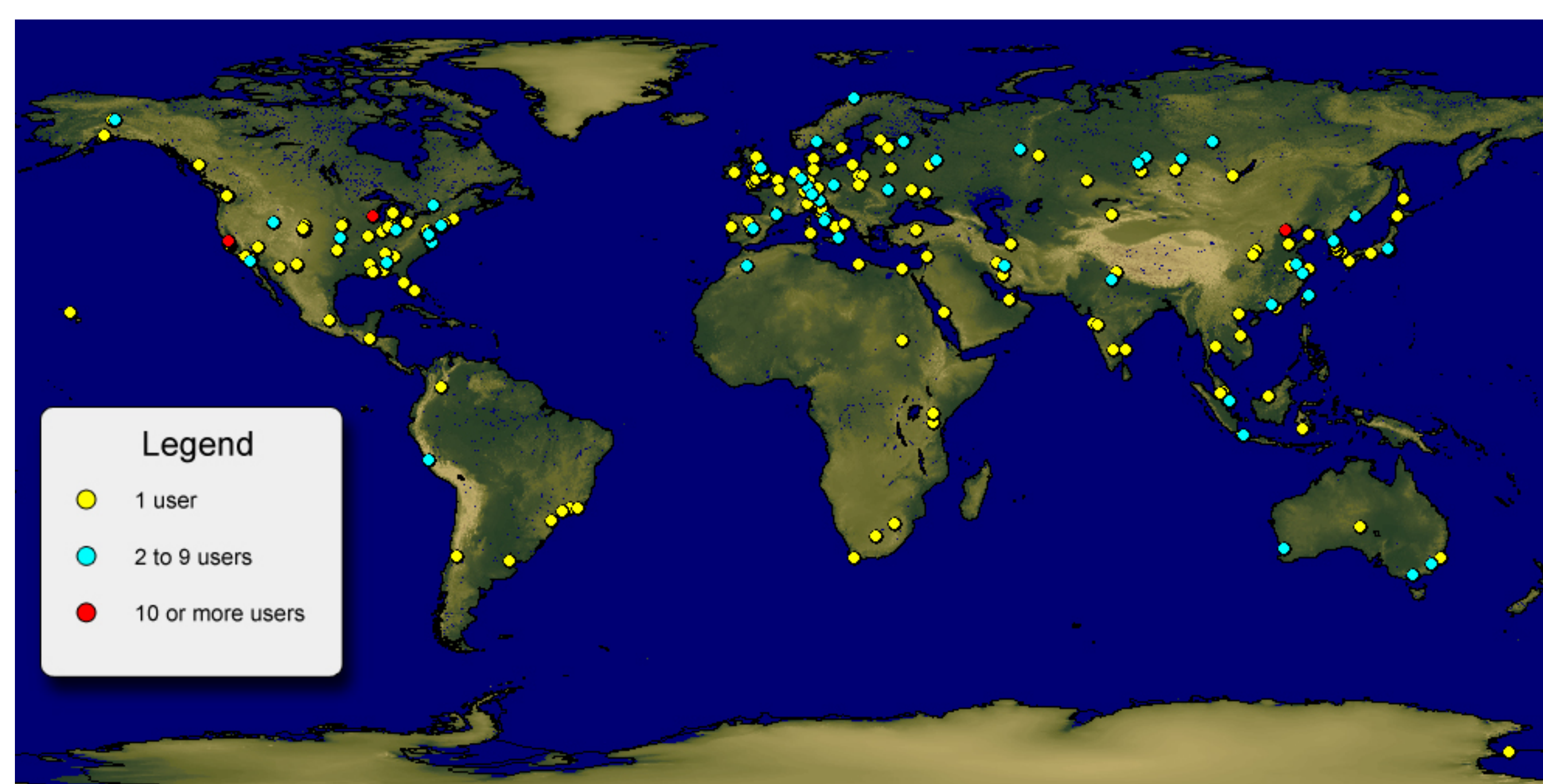
People who want to be able to utilize SNPP data use CSPP SDR.

People who want ease of installation use CSPP SDR.

People who want the latest algorithms, LUTS and ancillary data use CSPP SDR.

Anyone who wants to produce the latest SNPP SDR products with antenna acquired data uses CSPP SDR

What is CSPP SDR?



CSPP SDR is a software package that incorporates the official SNPP SDR algorithms into a form easily deployable for Direct Broadcast operations. The package includes the IDPS algorithms as delivered in the ADL framework. The binaries are packaged with scripts that simplify deployment by providing a command line activated driver. The scripts can be easily incorporated into operational systems without placing unnecessary burdens on the system.

The CSPP SDR packages produces ATMS, CrIS and VIIRS SDRs. In addition to the SNPP SDR algorithms the software package includes scripts for downloading and installing new LUTS and ancillary data. Quick look scripts generate images useful for verifying SDR products.

