

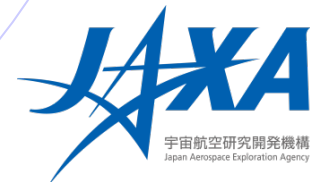
13p.05

JMA and JAXA



Kozo Okamoto*, Kotaro Bessho

(JMA : Japan Meteorological Agency)



Misako Kachi

(JAXA : Japan Aerospace Exploration Agency)



■ Himawari-8

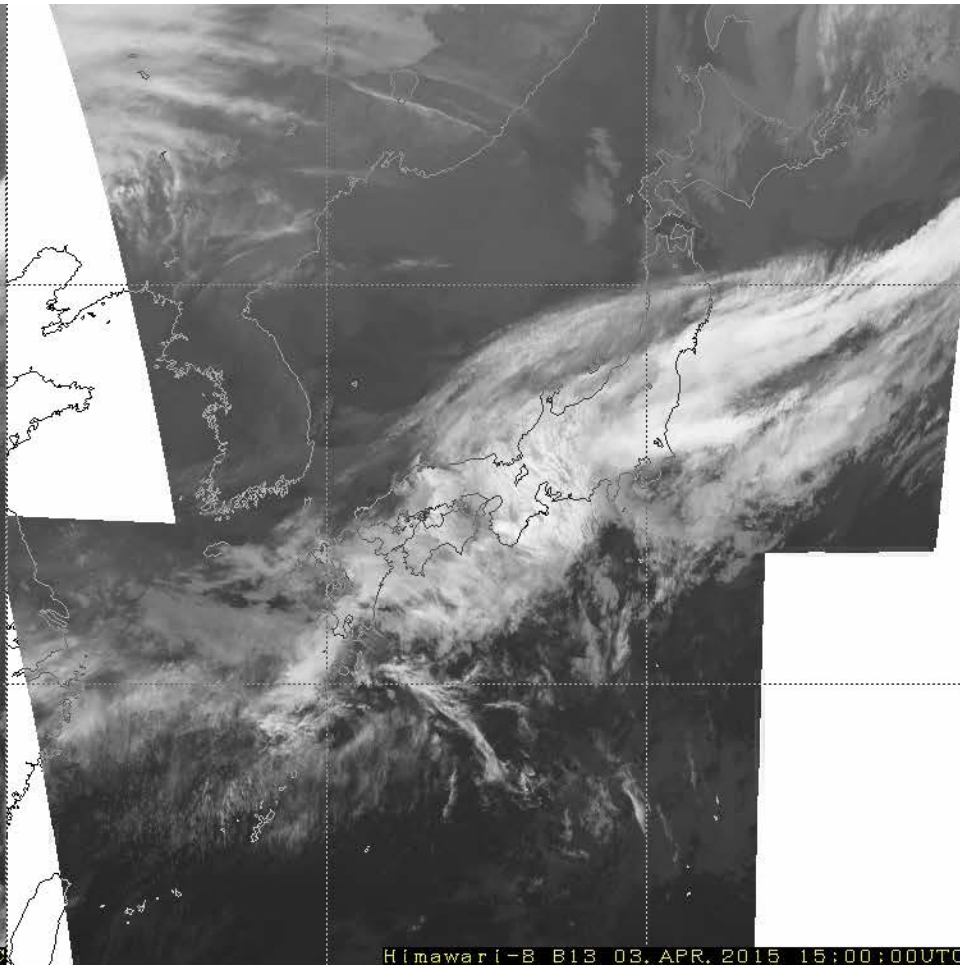
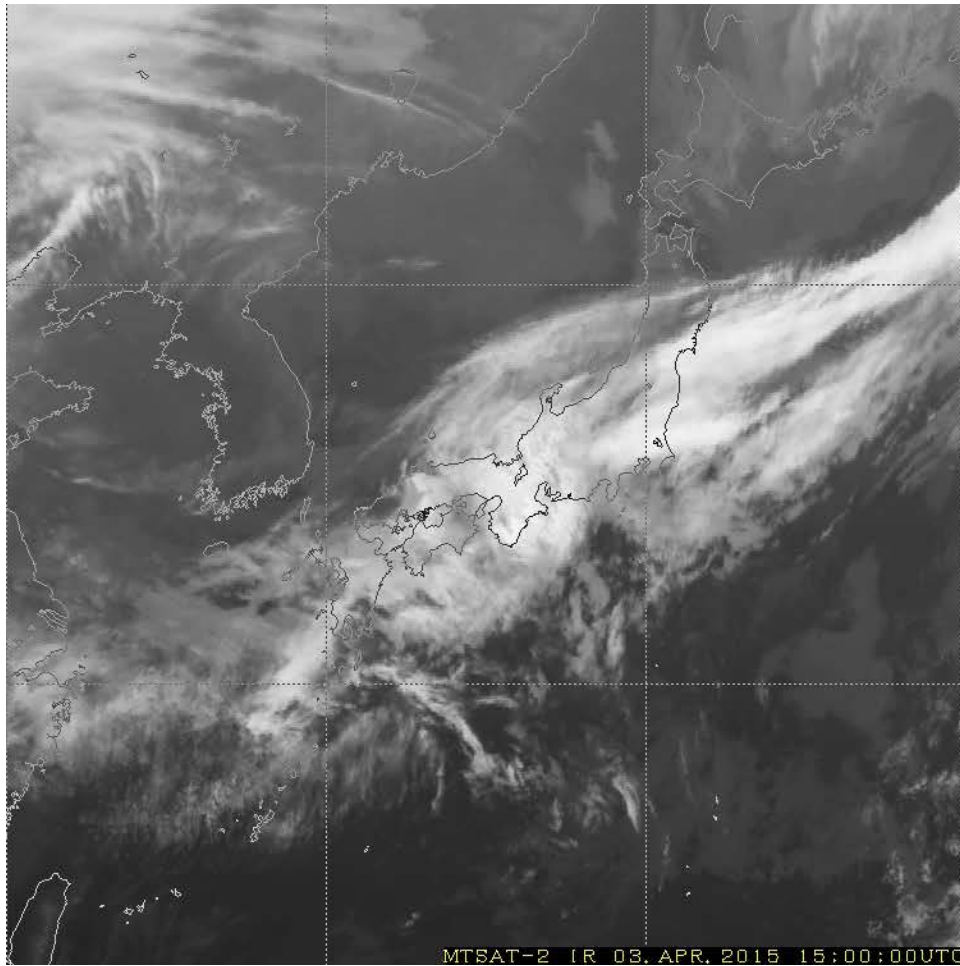
- Launched on 7 Oct 2014 and started operation on 7 July 2015
- **AHI** (Advanced Himawari Imager) performs very well
 - 16ch, 2km(IR),1/0.5km(VIS), 10min(full disk)/2.5min(Japan area)
- Data dissemination
 - **Himawari-Cloud service** : full data for NHMS
 - **HimawariCast** broadcasts limited data to ground stations via a communication satellite
- AMV and CSR from Himawari-8 and MTSAT-2 are disseminated
 - **Discontinue producing AMV and CSR from MTSAT-2 in late March 2016**

■ Himawari-9

- Scheduled for launch in the 2nd half of 2016

■ MTSAT-2 : stand-by satellite

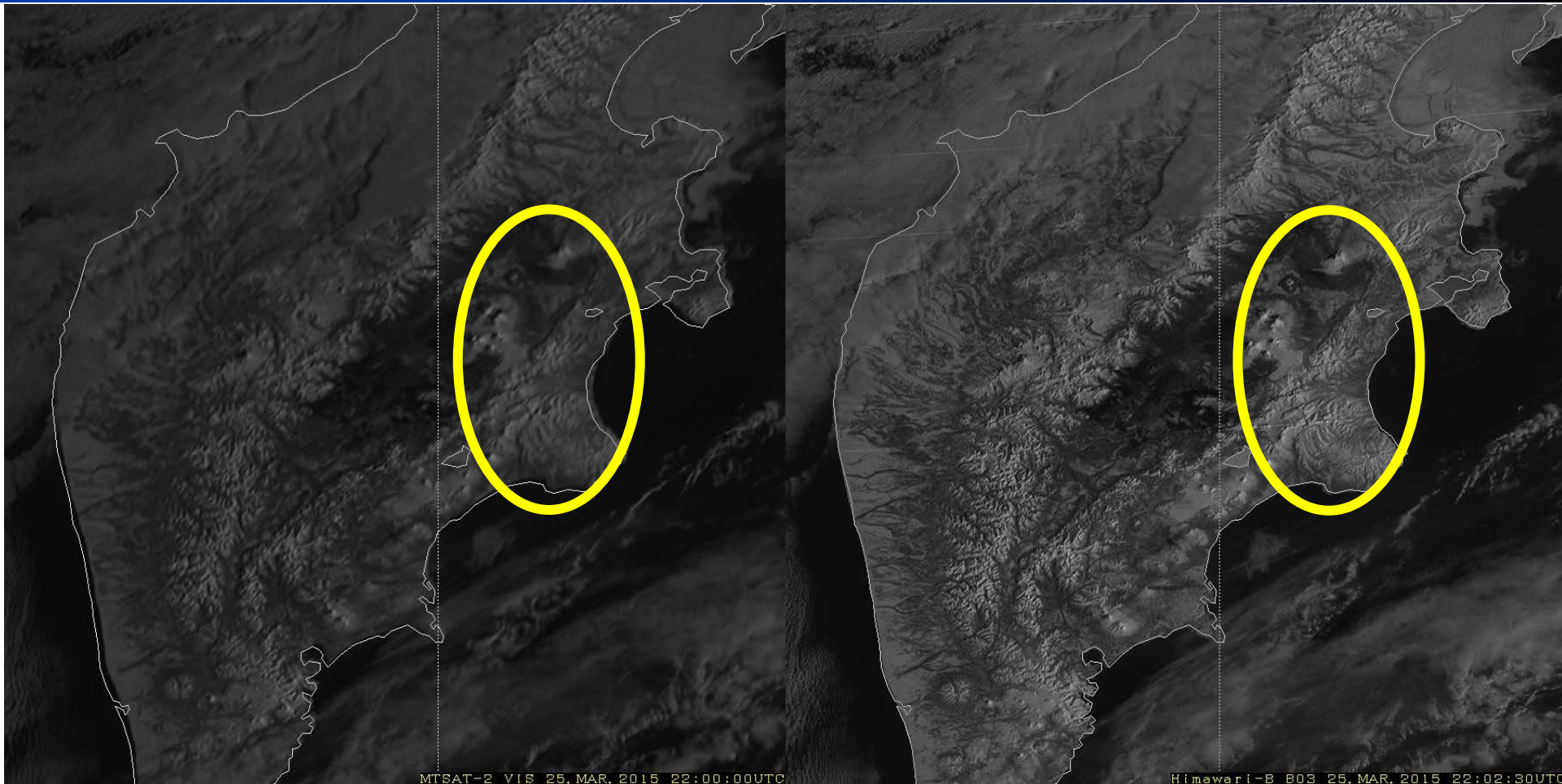
4 April 2015, Japan



MTSAT2 (IR1)
30min, 4km

Himawari8 (Band13)
2.5min, 2km

25 March 2015, Kamchatka



MTSAT2 (VIS)
30min, 1km

Himawari8 (Band3)
2.5min, 0.5km
Target observation

Eruption of Mt. Shiveluch



■ Himawari-8

- Launched on 7 Oct 2014 and started operation on 7 July 2015
- **AHI** (advanced imager) performs very well
 - 16ch, 2km(IR),1/0.5km(VIS), 10min(full disk)/2.5min(Japan area)
- Data dissemination
 - **Himawari-Cloud service** : full data for NHMS
 - **HimawariCast** broadcasts limited data to ground stations via a communication satellite
- AMV and CSR from Himawari-8 and MTSAT-2 are disseminated
 - **Discontinue producing AMV and CSR from MTSAT-2 in late March 2016**

■ Himawari-9

- Scheduled for launch in the 2nd half of 2016

■ MTSAT-2 : stand-by satellite

■ Current operation

- **DPR** on **GPM Core**: Dual-frequency Precipitation Radar (KuPR + KaPR), Feb 2014~
 - **PR** : Normal mission operation until 7 Oct 2014 (since 1997!)
 - Extra experimental operations until 1 Apr 2015
- **GOSAT** : **FTS** for GHG (CO₂ & CH₄), Jan 2009~
- **AMSR2** on **GCOM-W** : Microwave imager, May 2012~
- **PALSAR2** on **ALOS2** : SAR for monitoring environment, disaster and resource, May 2014~

■ Plans

- **SGLI** on **GCOM-C** (2016): Multi-ch optical imager for monitoring radiation budget and carbon cycle
- **CPR** on EarthCARE (Jan 2018) : Doppler cloud radar
- **TANSO-FTS-2** & **TANSO-CAI-2** on **GOSAT2** (early 2018) : FTS & imager for CO₂,CH₄,CO

■ Under discussion

- AMSR2 follow-on, GPM(/DPR) follow-on

JAXA Earth Observation Satellite Lineup

